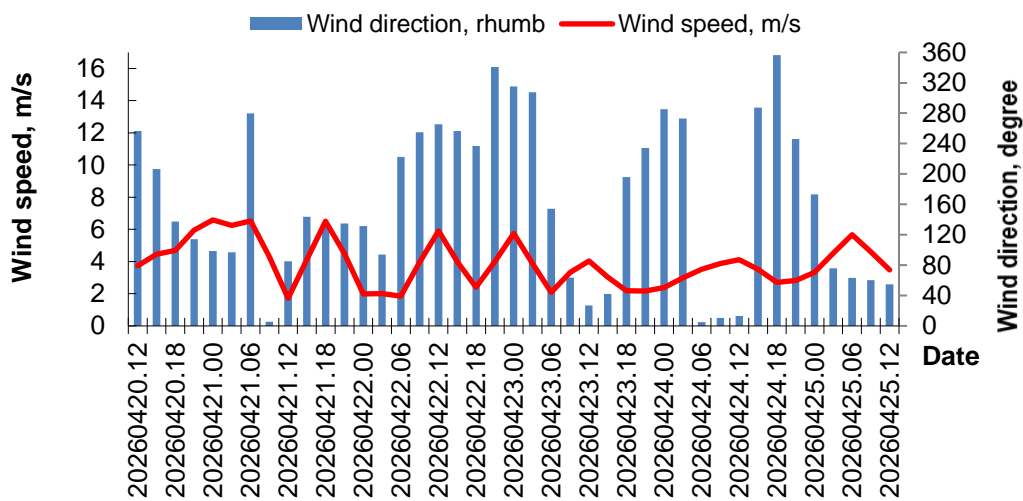




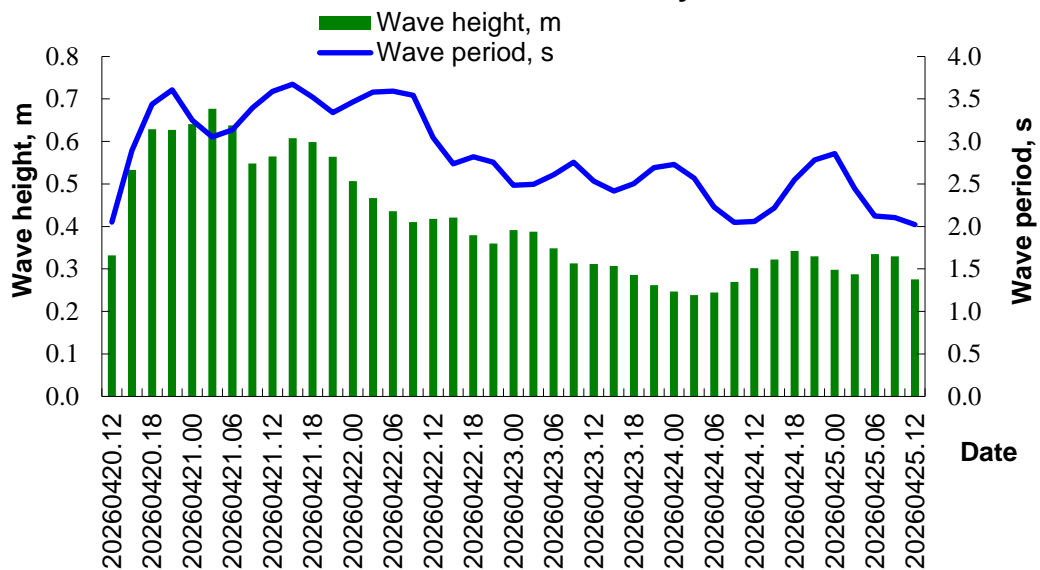
**MINISTRY OF ECOLOGY AND NATURAL RESOURCES
OF THE REPUBLIC OF KAZAKHSTAN
RSE «KAZHYDROMET»**

**Wave and wind forecast for the Kazakhstan part of the Caspian Sea with a 5-day advance
using SWAN spectral model for the period April 20 -- 25, 2026 .**

Wind condition in the Kulaly

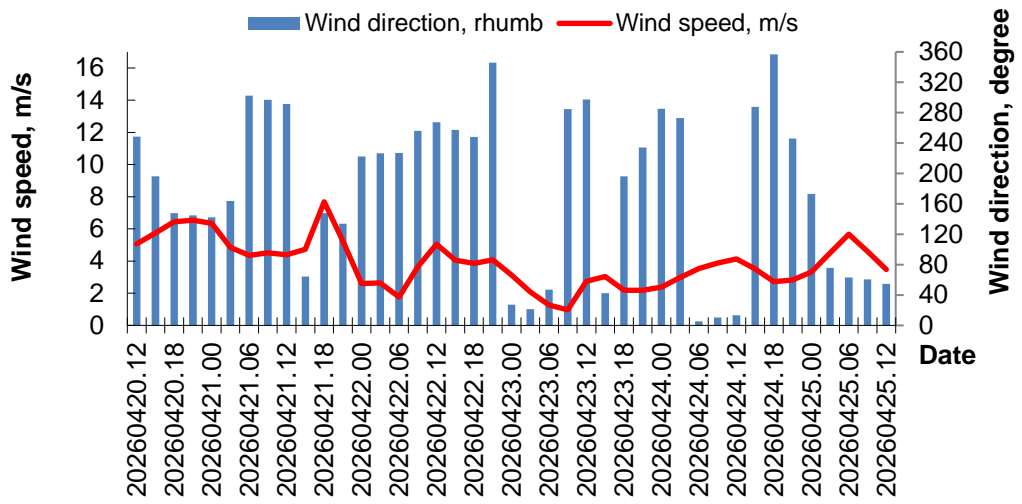


Wave condition in the Kulaly

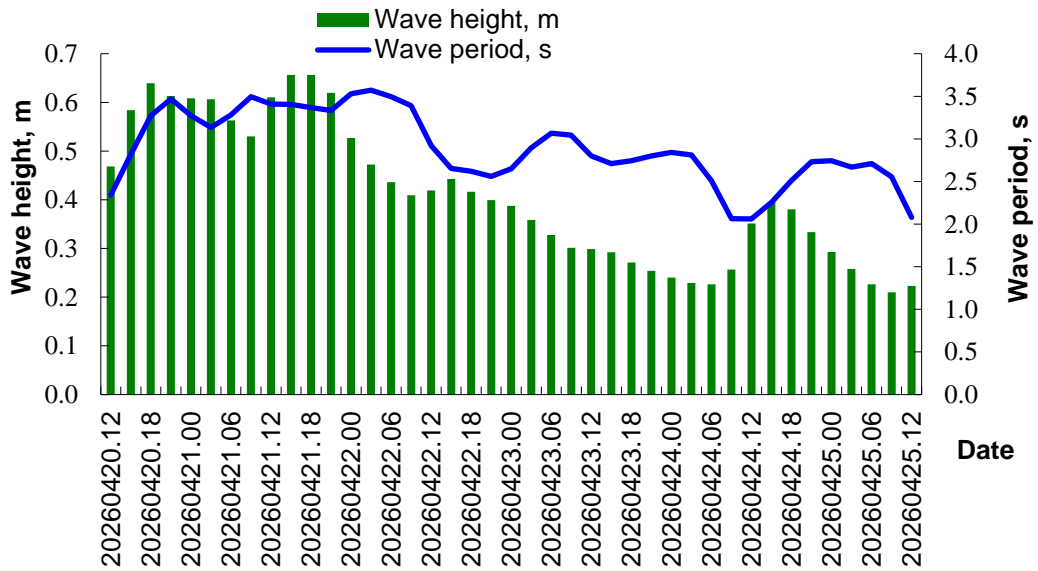


Date time	Kulaly				
	Wave height, m	Направление волны, румб	Wave height, m	Скорость ветра, м/с	Wave height, m
20260420.12	0.33	S	2.1	4	W
20260420.15	0.53	S	2.9	4	SW
20260420.18	0.63	S	3.4	5	SE
20260420.21	0.63	S	3.6	6	SE
20260421.00	0.64	SW	3.3	7	E
20260421.03	0.68	SW	3.1	6	E
20260421.06	0.64	SW	3.1	7	W
20260421.09	0.55	SW	3.4	4	N
20260421.12	0.56	S	3.6	2	E
20260421.15	0.61	S	3.7	4	SE
20260421.18	0.60	S	3.5	7	SE
20260421.21	0.56	S	3.3	4	SE
20260422.00	0.51	S	3.5	2	SE
20260422.03	0.47	S	3.6	2	E
20260422.06	0.44	S	3.6	2	SW
20260422.09	0.41	S	3.5	4	W
20260422.12	0.42	S	3.0	6	W
20260422.15	0.42	S	2.7	4	W
20260422.18	0.38	S	2.8	2	SW
20260422.21	0.36	S	2.8	4	N
20260423.00	0.39	S	2.5	6	NW
20260423.03	0.39	S	2.5	4	NW
20260423.06	0.35	S	2.6	2	SE
20260423.09	0.31	S	2.8	3	NE
20260423.12	0.31	S	2.5	4	NE
20260423.15	0.31	S	2.4	3	NE
20260423.18	0.29	SE	2.5	2	S
20260423.21	0.26	SE	2.7	2	SW
20260424.00	0.25	SE	2.7	2	W
20260424.03	0.24	SE	2.6	3	W
20260424.06	0.24	E	2.2	4	N
20260424.09	0.27	E	2.0	4	N
20260424.12	0.30	E	2.1	4	N
20260424.15	0.32	NE	2.2	4	W
20260424.18	0.34	NE	2.5	3	N
20260424.21	0.33	NE	2.8	3	SW
20260425.00	0.30	NE	2.9	3	S
20260425.03	0.29	NE	2.4	5	E
20260425.06	0.33	NE	2.1	6	NE
20260425.09	0.33	NE	2.1	5	NE
20260425.12	0.28	NE	2.0	3	NE

Wind condition in the Fort-Shevchenko

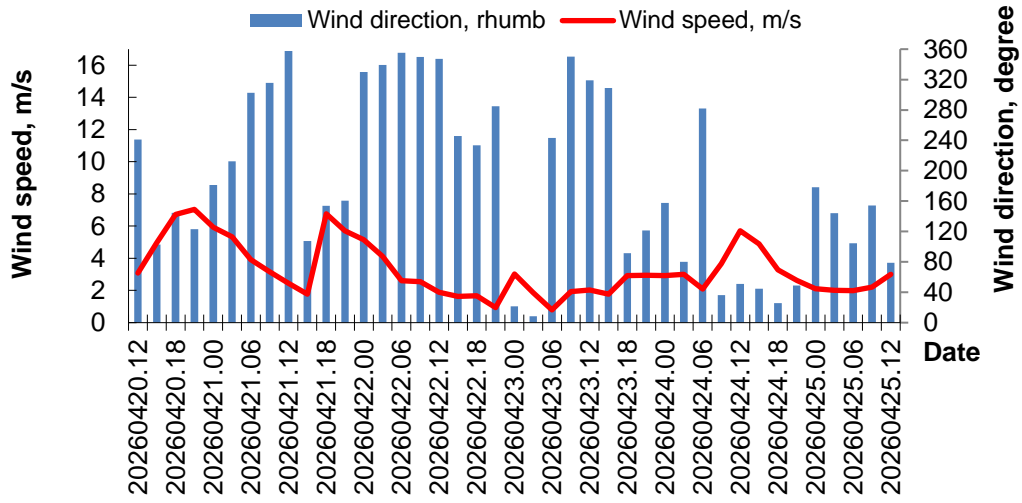


Wave condition in the Fort-Shevchenko

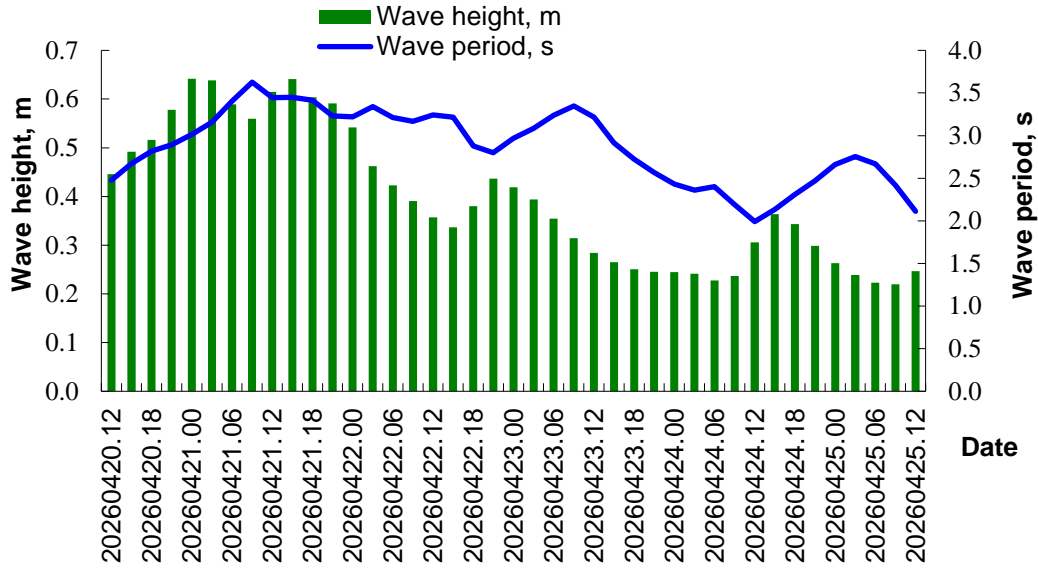


Date time	Fort-Shevchenko				
	Wave height, m	Направление волны, румб	Wave height, m	Скорость ветра, м/с	Wave height, m
20260420.12	0.47	S	2.3	5	W
20260420.15	0.58	SW	2.8	6	S
20260420.18	0.64	SW	3.3	6	SE
20260420.21	0.61	SW	3.5	7	SE
20260421.00	0.61	SW	3.3	6	SE
20260421.03	0.61	SW	3.1	5	S
20260421.06	0.56	SW	3.3	4	NW
20260421.09	0.53	S	3.5	5	NW
20260421.12	0.61	S	3.4	4	W
20260421.15	0.66	S	3.4	5	NE
20260421.18	0.66	S	3.4	8	SE
20260421.21	0.62	S	3.3	5	SE
20260422.00	0.53	S	3.5	3	SW
20260422.03	0.47	S	3.6	3	SW
20260422.06	0.44	S	3.5	2	SW
20260422.09	0.41	S	3.4	4	W
20260422.12	0.42	S	2.9	5	W
20260422.15	0.44	S	2.7	4	W
20260422.18	0.42	S	2.6	4	W
20260422.21	0.40	S	2.6	4	N
20260423.00	0.39	S	2.7	3	NE
20260423.03	0.36	S	2.9	2	N
20260423.06	0.33	S	3.1	1	NE
20260423.09	0.30	S	3.0	1	W
20260423.12	0.30	S	2.8	3	NW
20260423.15	0.29	S	2.7	3	NE
20260423.18	0.27	S	2.7	2	S
20260423.21	0.25	S	2.8	2	SW
20260424.00	0.24	SE	2.8	2	W
20260424.03	0.23	SE	2.8	3	W
20260424.06	0.23	E	2.5	4	N
20260424.09	0.26	E	2.1	4	N
20260424.12	0.35	NE	2.1	4	N
20260424.15	0.40	NE	2.3	4	W
20260424.18	0.38	NE	2.5	3	N
20260424.21	0.33	NE	2.7	3	SW
20260425.00	0.29	NE	2.7	3	S
20260425.03	0.26	NE	2.7	5	E
20260425.06	0.23	NE	2.7	6	NE
20260425.09	0.21	NE	2.6	5	NE
20260425.12	0.22	NE	2.1	3	NE

Wind condition in the Aktau

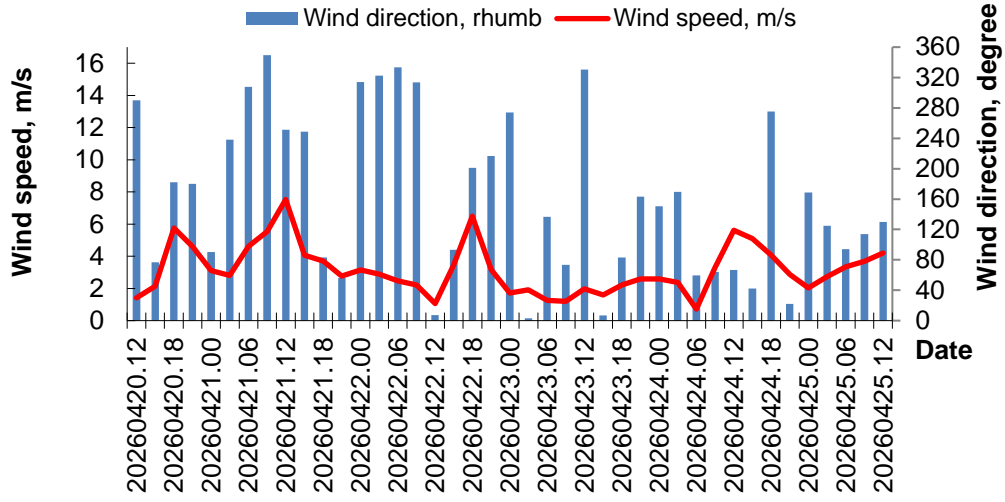


Wave condition in the Aktau

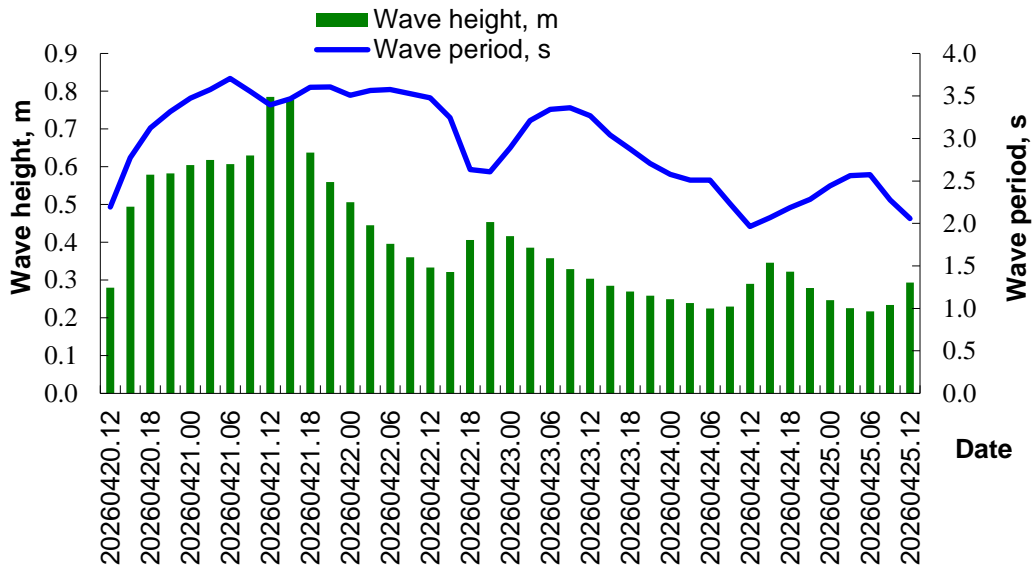


Date time	Aktau				
	Wave height, m	Направление волны, румб	Wave height, m	Скорость ветра, м/с	Wave height, m
20260420.12	0.45	SW	2.5	3	SW
20260420.15	0.49	SW	2.7	5	E
20260420.18	0.52	SW	2.8	7	SE
20260420.21	0.58	SW	2.9	7	SE
20260421.00	0.64	SW	3.0	6	S
20260421.03	0.64	SW	3.2	5	SW
20260421.06	0.59	S	3.4	4	NW
20260421.09	0.56	S	3.6	3	NW
20260421.12	0.61	S	3.4	2	N
20260421.15	0.64	S	3.4	2	E
20260421.18	0.60	S	3.4	7	SE
20260421.21	0.59	SW	3.2	6	S
20260422.00	0.54	SW	3.2	5	NW
20260422.03	0.46	SW	3.3	4	N
20260422.06	0.42	S	3.2	3	N
20260422.09	0.39	S	3.2	3	N
20260422.12	0.36	S	3.2	2	N
20260422.15	0.34	S	3.2	2	SW
20260422.18	0.38	SW	2.9	2	SW
20260422.21	0.44	SW	2.8	1	W
20260423.00	0.42	SW	3.0	3	N
20260423.03	0.39	SW	3.1	2	N
20260423.06	0.35	SW	3.2	1	SW
20260423.09	0.31	SW	3.3	2	N
20260423.12	0.28	SW	3.2	2	NW
20260423.15	0.26	SW	2.9	2	NW
20260423.18	0.25	SW	2.7	3	E
20260423.21	0.25	W	2.6	3	SE
20260424.00	0.24	W	2.4	3	S
20260424.03	0.24	NW	2.4	3	E
20260424.06	0.23	NW	2.4	2	W
20260424.09	0.24	NE	2.2	4	NE
20260424.12	0.31	NE	2.0	6	NE
20260424.15	0.36	NE	2.1	5	NE
20260424.18	0.34	NE	2.3	3	NE
20260424.21	0.30	NE	2.5	3	NE
20260425.00	0.26	NE	2.7	2	S
20260425.03	0.24	N	2.8	2	SE
20260425.06	0.22	N	2.7	2	E
20260425.09	0.22	N	2.4	2	SE
20260425.12	0.25	N	2.1	3	E

Wind condition in the Peschanyi

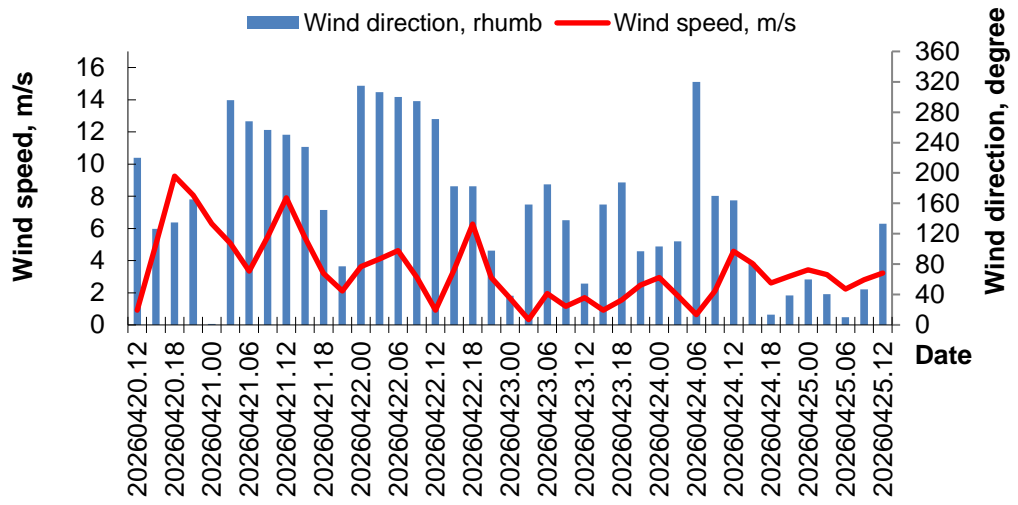


Wave condition in the Peschanyi

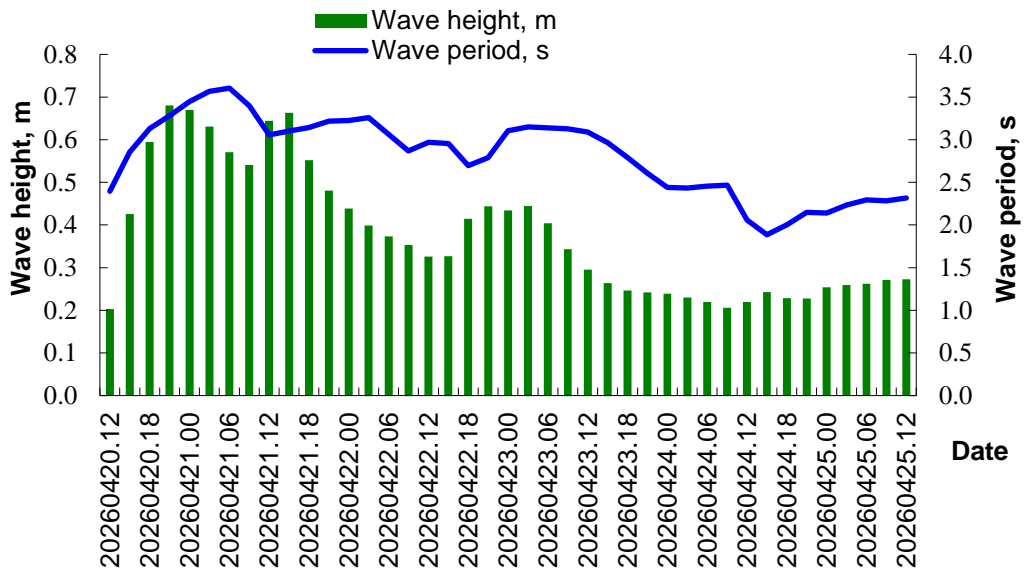


Date time	Peschanyi (Isan)				
	Wave height, m	Направление волны, румб	Wave height, m	Скорость ветра, м/с	Wave height, m
20260420.12	0.28	S	2.2	1	W
20260420.15	0.49	S	2.8	2	E
20260420.18	0.58	S	3.1	6	S
20260420.21	0.58	S	3.3	5	S
20260421.00	0.60	S	3.5	3	E
20260421.03	0.62	S	3.6	3	SW
20260421.06	0.61	S	3.7	5	NW
20260421.09	0.63	S	3.6	6	N
20260421.12	0.78	S	3.4	8	W
20260421.15	0.78	S	3.5	4	W
20260421.18	0.64	S	3.6	4	E
20260421.21	0.56	S	3.6	3	NE
20260422.00	0.51	SW	3.5	3	NW
20260422.03	0.45	SW	3.6	3	NW
20260422.06	0.40	SW	3.6	2	NW
20260422.09	0.36	SW	3.5	2	NW
20260422.12	0.33	SW	3.5	1	N
20260422.15	0.32	SW	3.2	3	E
20260422.18	0.41	SW	2.6	6	S
20260422.21	0.45	SW	2.6	3	SW
20260423.00	0.42	SW	2.9	2	W
20260423.03	0.39	SW	3.2	2	N
20260423.06	0.36	SW	3.3	1	SE
20260423.09	0.33	SW	3.4	1	E
20260423.12	0.30	SW	3.3	2	NW
20260423.15	0.29	SW	3.0	2	N
20260423.18	0.27	W	2.9	2	E
20260423.21	0.26	W	2.7	3	S
20260424.00	0.25	W	2.6	3	SE
20260424.03	0.24	W	2.5	2	S
20260424.06	0.22	NW	2.5	1	NE
20260424.09	0.23	N	2.2	3	NE
20260424.12	0.29	NE	2.0	6	NE
20260424.15	0.35	NE	2.1	5	NE
20260424.18	0.32	NE	2.2	4	W
20260424.21	0.28	NE	2.3	3	N
20260425.00	0.25	NE	2.4	2	S
20260425.03	0.23	N	2.6	3	SE
20260425.06	0.22	N	2.6	3	E
20260425.09	0.23	N	2.3	4	SE
20260425.12	0.29	NW	2.1	4	SE

Wind condition in the Fetisovo

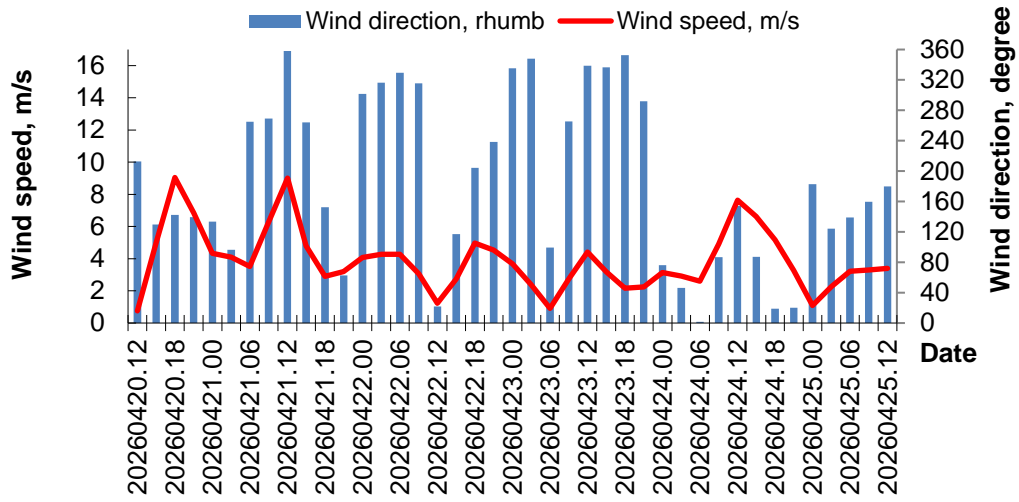


Wave condition in the Fetisovo

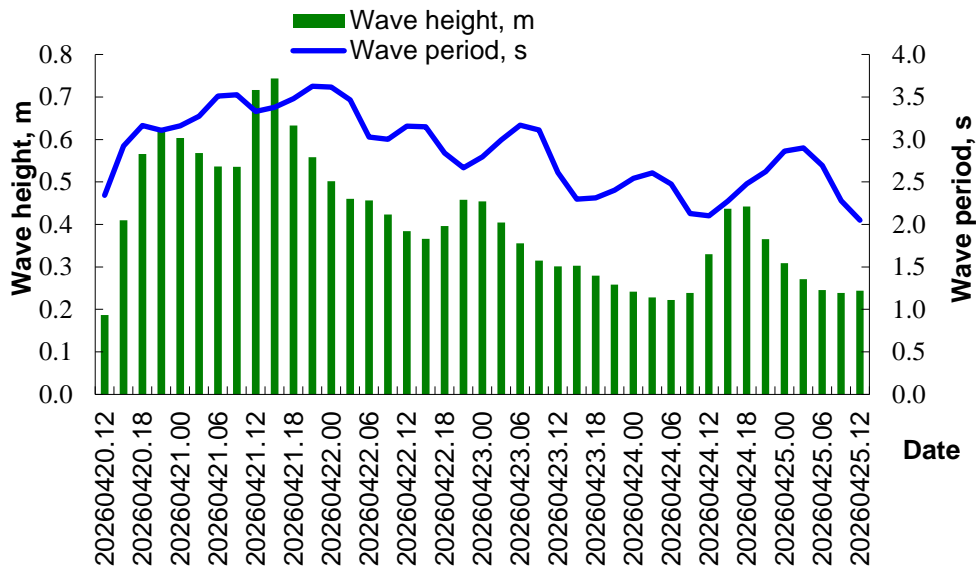


Date time	Fetisovo				
	Wave height, m	Направление волны, румб	Wave height, m	Скорость ветра, м/с	Wave height, m
20260420.12	0.20	SW	2.4	1	SW
20260420.15	0.43	SW	2.9	5	SE
20260420.18	0.59	SW	3.1	9	SE
20260420.21	0.68	SW	3.3	8	S
20260421.00	0.67	S	3.4	6	N
20260421.03	0.63	S	3.6	5	NW
20260421.06	0.57	S	3.6	3	W
20260421.09	0.54	S	3.4	5	W
20260421.12	0.64	S	3.1	8	W
20260421.15	0.66	S	3.1	5	SW
20260421.18	0.55	S	3.1	3	SE
20260421.21	0.48	SW	3.2	2	E
20260422.00	0.44	SW	3.2	4	NW
20260422.03	0.40	W	3.3	4	NW
20260422.06	0.37	W	3.1	5	NW
20260422.09	0.35	W	2.9	3	NW
20260422.12	0.33	W	3.0	1	W
20260422.15	0.33	SW	3.0	3	S
20260422.18	0.41	SW	2.7	6	S
20260422.21	0.44	SW	2.8	3	E
20260423.00	0.43	W	3.1	2	NE
20260423.03	0.44	W	3.1	0	S
20260423.06	0.40	NW	3.1	2	S
20260423.09	0.34	W	3.1	1	SE
20260423.12	0.30	W	3.1	2	NE
20260423.15	0.26	W	3.0	1	S
20260423.18	0.25	SW	2.8	2	S
20260423.21	0.24	SW	2.6	2	E
20260424.00	0.24	W	2.4	3	E
20260424.03	0.23	W	2.4	2	E
20260424.06	0.22	W	2.5	1	NW
20260424.09	0.21	NW	2.5	2	S
20260424.12	0.22	NW	2.1	5	S
20260424.15	0.24	N	1.9	4	E
20260424.18	0.23	N	2.0	3	N
20260424.21	0.23	NE	2.1	3	NE
20260425.00	0.25	NE	2.1	3	NE
20260425.03	0.26	NE	2.2	3	NE
20260425.06	0.26	NE	2.3	2	N
20260425.09	0.27	NE	2.3	3	NE
20260425.12	0.27	NE	2.3	3	SE

Wind condition in the Saura

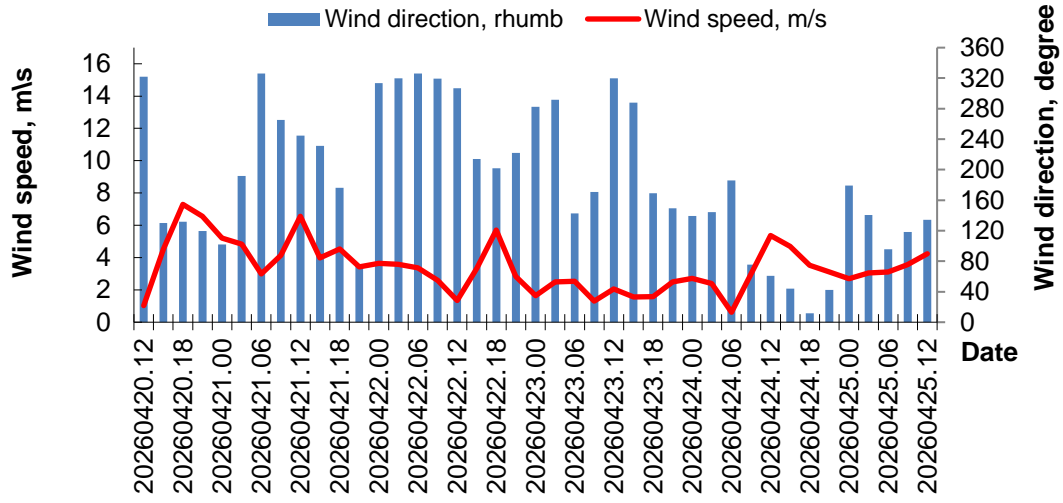


Wave condition in the Saura

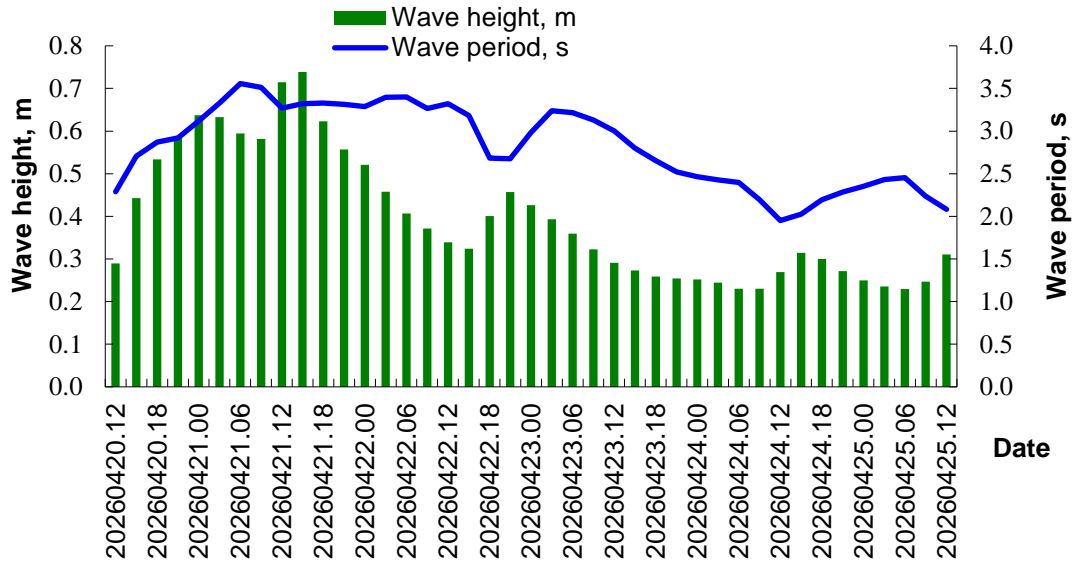


Date time	Saura				
	Wave height, m	Направление волны, румб	Wave height, m	Скорость ветра, м/с	Wave height, m
20260420.12	0.19	SW	2.3	1	SW
20260420.15	0.41	S	2.9	5	SE
20260420.18	0.57	SW	3.2	9	SE
20260420.21	0.62	SW	3.1	7	SE
20260421.00	0.60	SW	3.2	4	SE
20260421.03	0.57	SW	3.3	4	E
20260421.06	0.54	SW	3.5	4	W
20260421.09	0.54	S	3.5	6	W
20260421.12	0.72	S	3.3	9	N
20260421.15	0.74	S	3.4	5	W
20260421.18	0.63	S	3.5	3	SE
20260421.21	0.56	S	3.6	3	NE
20260422.00	0.50	S	3.6	4	NW
20260422.03	0.46	S	3.5	4	NW
20260422.06	0.46	S	3.0	4	NW
20260422.09	0.42	S	3.0	3	NW
20260422.12	0.38	S	3.2	1	N
20260422.15	0.37	S	3.1	3	SE
20260422.18	0.40	S	2.8	5	SW
20260422.21	0.46	S	2.7	5	SW
20260423.00	0.45	S	2.8	4	NW
20260423.03	0.40	S	3.0	2	N
20260423.06	0.36	S	3.2	1	E
20260423.09	0.32	S	3.1	3	W
20260423.12	0.30	S	2.6	4	N
20260423.15	0.30	S	2.3	3	NW
20260423.18	0.28	S	2.3	2	N
20260423.21	0.26	S	2.4	2	W
20260424.00	0.24	SE	2.5	3	E
20260424.03	0.23	E	2.6	3	NE
20260424.06	0.22	E	2.5	3	N
20260424.09	0.24	E	2.1	5	E
20260424.12	0.33	N	2.1	8	SE
20260424.15	0.44	N	2.3	7	E
20260424.18	0.44	N	2.5	5	N
20260424.21	0.37	NE	2.6	3	N
20260425.00	0.31	NE	2.9	1	S
20260425.03	0.27	NE	2.9	2	SE
20260425.06	0.25	N	2.7	3	SE
20260425.09	0.24	N	2.3	3	S
20260425.12	0.24	N	2.1	3	S

Wind condition in the Kuryik



Wave condition in the Kuryik



Date time	Kuryk				
	Wave height, m	Направление волны, румб	Wave height, m	Скорость ветра, м/с	Wave height, m
20260420.12	0.29	SW	2.3	1	NW
20260420.15	0.44	SW	2.7	5	SE
20260420.18	0.53	SW	2.9	7	SE
20260420.21	0.59	SW	2.9	7	SE
20260421.00	0.64	SW	3.1	5	E
20260421.03	0.63	SW	3.3	5	S
20260421.06	0.59	S	3.6	3	NW
20260421.09	0.58	S	3.5	4	W
20260421.12	0.71	S	3.3	7	SW
20260421.15	0.74	S	3.3	4	SW
20260421.18	0.62	S	3.3	5	S
20260421.21	0.56	SW	3.3	3	E
20260422.00	0.52	SW	3.3	4	NW
20260422.03	0.46	SW	3.4	4	NW
20260422.06	0.41	SW	3.4	3	NW
20260422.09	0.37	SW	3.3	3	NW
20260422.12	0.34	SW	3.3	1	NW
20260422.15	0.32	SW	3.2	3	SW
20260422.18	0.40	SW	2.7	6	S
20260422.21	0.46	SW	2.7	3	SW
20260423.00	0.43	SW	3.0	2	W
20260423.03	0.39	SW	3.2	3	W
20260423.06	0.36	SW	3.2	3	SE
20260423.09	0.32	SW	3.1	1	S
20260423.12	0.29	SW	3.0	2	NW
20260423.15	0.27	SW	2.8	2	W
20260423.18	0.26	SW	2.7	2	S
20260423.21	0.25	W	2.5	2	SE
20260424.00	0.25	W	2.5	3	SE
20260424.03	0.24	W	2.4	2	SE
20260424.06	0.23	W	2.4	1	S
20260424.09	0.23	W	2.2	3	E
20260424.12	0.27	N	2.0	5	NE
20260424.15	0.31	NE	2.0	5	NE
20260424.18	0.30	NE	2.2	4	N
20260424.21	0.27	NE	2.3	3	NE
20260425.00	0.25	NE	2.4	3	S
20260425.03	0.24	N	2.4	3	SE
20260425.06	0.23	N	2.5	3	E
20260425.09	0.25	N	2.2	4	SE
20260425.12	0.31	NW	2.1	4	SE

**Calculation characteristics were obtained using the SWAN wave model, adapted in RSE «Kazhydromet» to the conditions of the Caspian Sea.*

Compiled by: Zhagparova N.N.

Checked by: Kurmangalieva A.

RSE «Kazhydromet» – Caspian Sea Hydrometeorological Research Department

Phone. (717)2 79 83 12; E-mail: ugmikm@meteo.kz