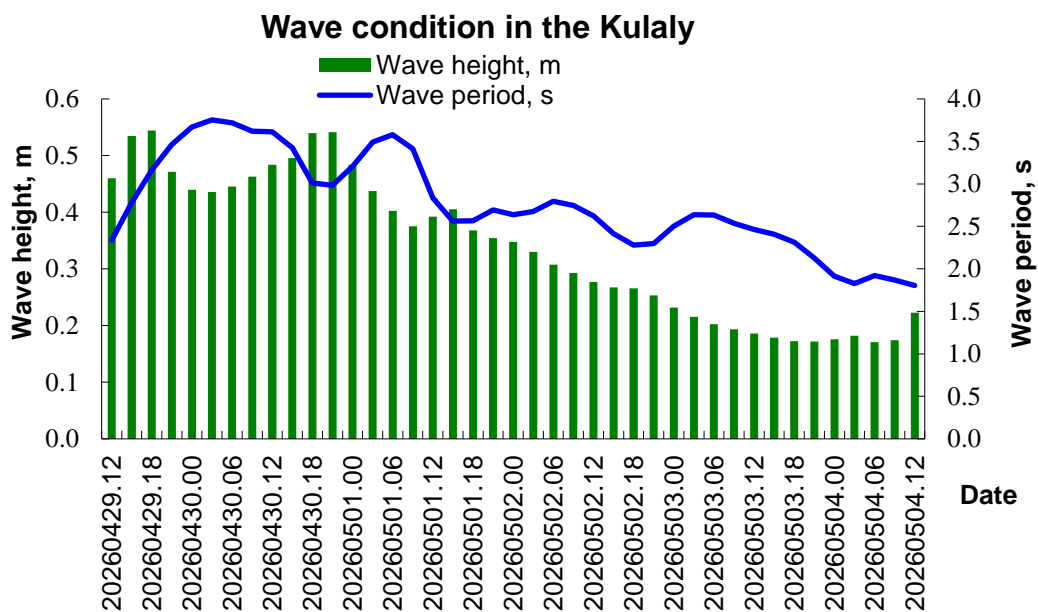
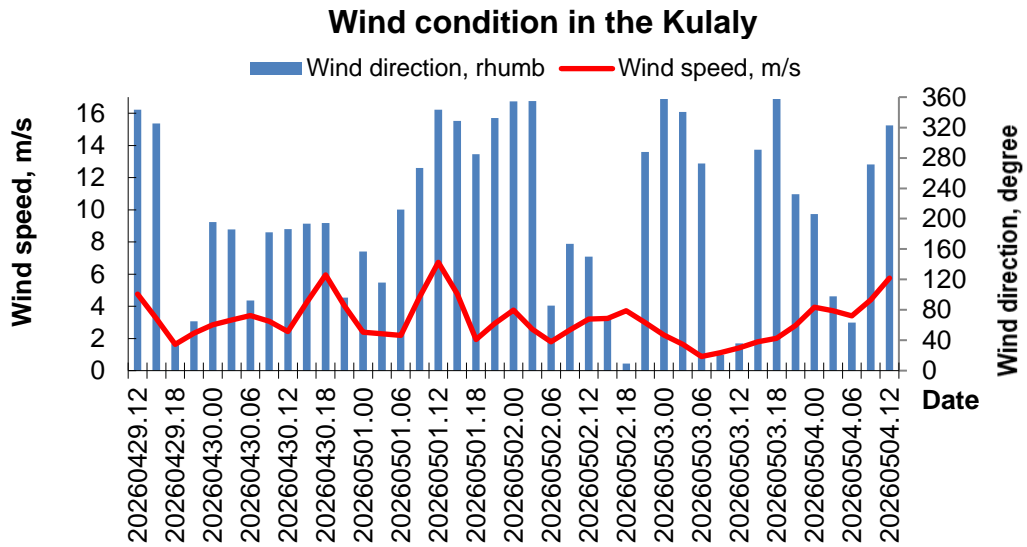




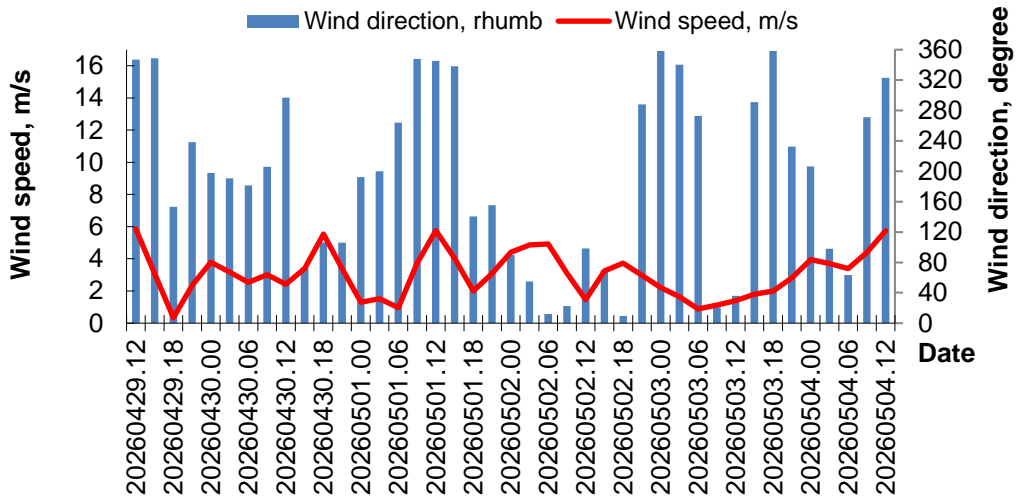
**MINISTRY OF ECOLOGY AND NATURAL RESOURCES  
OF THE REPUBLIC OF KAZAKHSTAN  
RSE «KAZHYDROMET»**

**Wave and wind forecast for the Kazakhstan part of the Caspian Sea with a 5-day advance  
using SWAN spectral model for the period April 29 -- May 04, 2026 .**

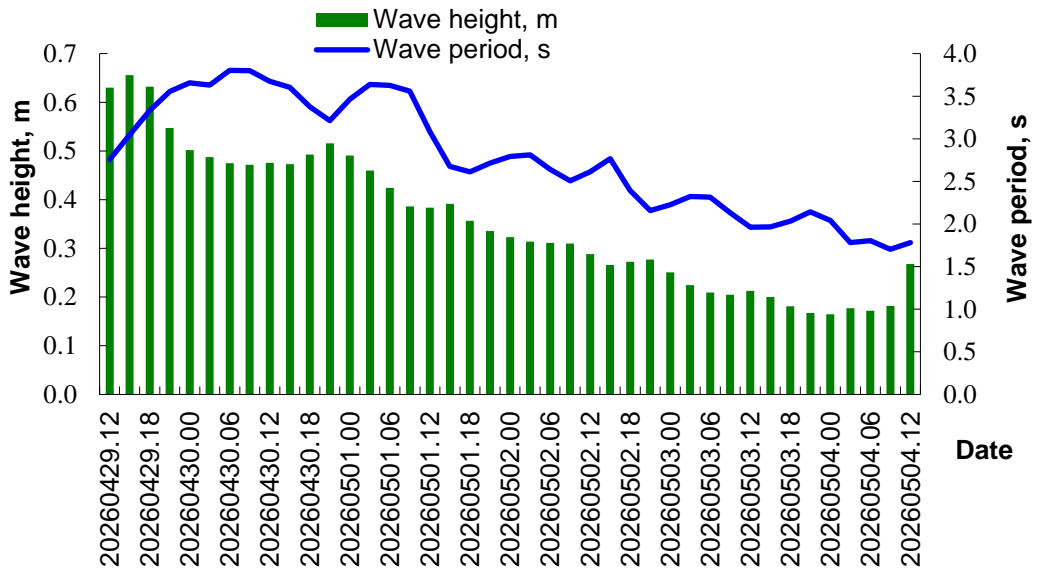


Date time	Kulaly				
	Wave height, m	Направление волны, румб	Wave height, m	Скорость ветра, м/с	Wave height, m
20260429.12	0.46	S	2.3	5	N
20260429.15	0.53	S	2.8	3	NW
20260429.18	0.54	S	3.2	2	NE
20260429.21	0.47	SE	3.5	2	NE
20260430.00	0.44	SE	3.7	3	S
20260430.03	0.44	SE	3.8	3	S
20260430.06	0.45	SE	3.7	3	E
20260430.09	0.46	SE	3.6	3	S
20260430.12	0.48	S	3.6	2	S
20260430.15	0.50	S	3.4	4	S
20260430.18	0.54	S	3.0	6	S
20260430.21	0.54	SW	3.0	4	E
20260501.00	0.48	S	3.2	2	SE
20260501.03	0.44	S	3.5	2	SE
20260501.06	0.40	S	3.6	2	SW
20260501.09	0.38	SW	3.4	5	W
20260501.12	0.39	S	2.8	7	N
20260501.15	0.41	S	2.6	5	NW
20260501.18	0.37	S	2.6	2	W
20260501.21	0.35	SW	2.7	3	NW
20260502.00	0.35	SW	2.6	4	N
20260502.03	0.33	SW	2.7	3	N
20260502.06	0.31	SW	2.8	2	E
20260502.09	0.29	SW	2.7	3	S
20260502.12	0.28	SW	2.6	3	SE
20260502.15	0.27	SW	2.4	3	E
20260502.18	0.27	S	2.3	4	N
20260502.21	0.25	SE	2.3	3	W
20260503.00	0.23	SE	2.5	2	N
20260503.03	0.22	SE	2.6	2	N
20260503.06	0.20	SE	2.6	1	W
20260503.09	0.19	SE	2.5	1	N
20260503.12	0.19	SE	2.5	1	NE
20260503.15	0.18	SE	2.4	2	W
20260503.18	0.17	SE	2.3	2	N
20260503.21	0.17	SE	2.1	3	SW
20260504.00	0.18	SE	1.9	4	SW
20260504.03	0.18	S	1.8	4	E
20260504.06	0.17	SW	1.9	3	NE
20260504.09	0.17	SE	1.9	4	W
20260504.12	0.22	SE	1.8	6	NW

### Wind condition in the Fort-Shevchenko

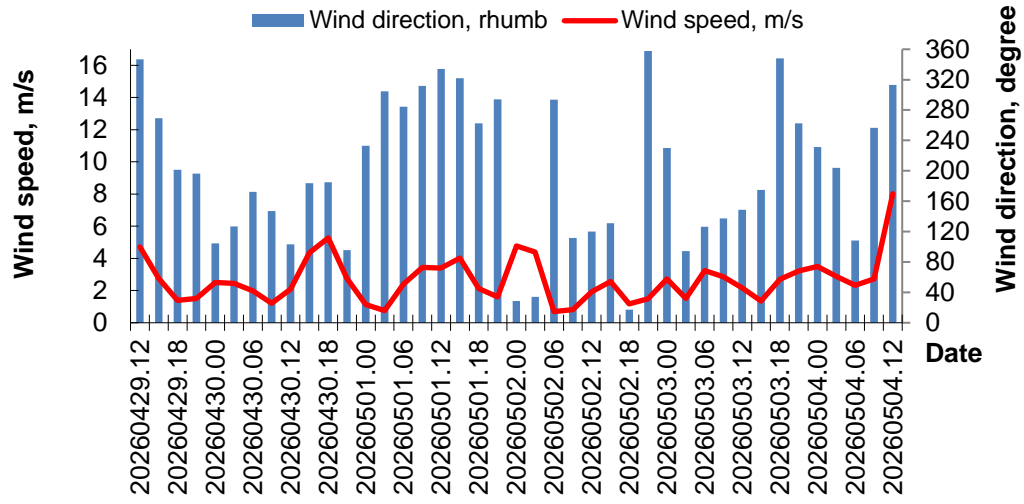


### Wave condition in the Fort-Shevchenko

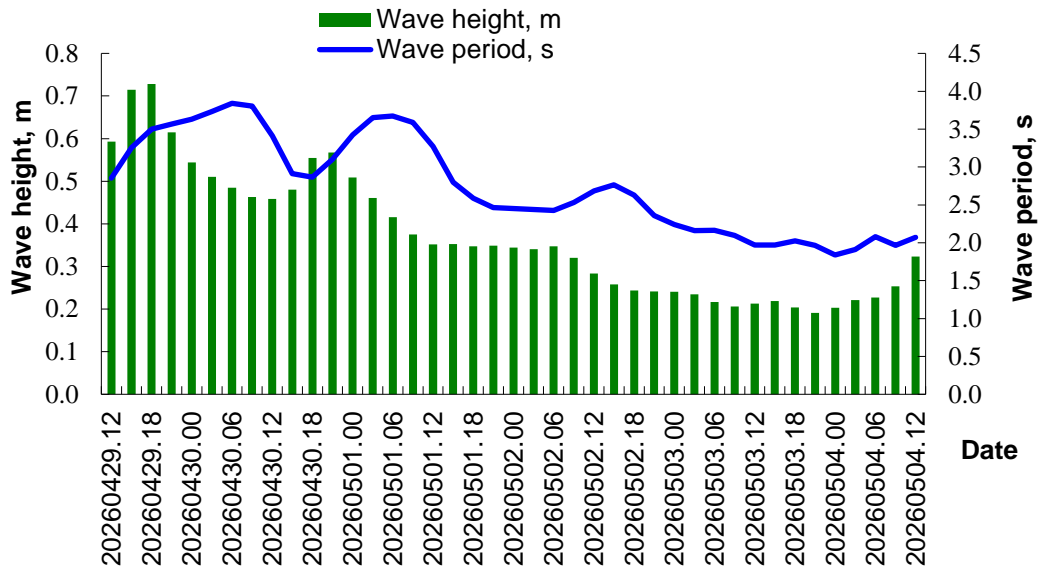


Date time	Fort-Shevchenko				
	Wave height, m	Направление волны, румб	Wave height, m	Скорость ветра, м/с	Wave height, m
20260429.12	0.63	S	2.8	6	N
20260429.15	0.66	S	3.0	3	N
20260429.18	0.63	S	3.3	0	SE
20260429.21	0.55	SE	3.6	2	SW
20260430.00	0.50	SE	3.7	4	S
20260430.03	0.49	SE	3.6	3	S
20260430.06	0.47	SE	3.8	3	S
20260430.09	0.47	SE	3.8	3	SW
20260430.12	0.48	S	3.7	2	NW
20260430.15	0.47	S	3.6	3	E
20260430.18	0.49	S	3.4	6	E
20260430.21	0.52	S	3.2	3	E
20260501.00	0.49	S	3.5	1	S
20260501.03	0.46	S	3.6	2	S
20260501.06	0.42	SW	3.6	1	W
20260501.09	0.39	SW	3.6	4	N
20260501.12	0.38	SW	3.1	6	N
20260501.15	0.39	S	2.7	4	N
20260501.18	0.36	SW	2.6	2	SE
20260501.21	0.34	SW	2.7	3	SE
20260502.00	0.32	SW	2.8	4	E
20260502.03	0.31	SW	2.8	5	NE
20260502.06	0.31	SW	2.6	5	N
20260502.09	0.31	SW	2.5	3	N
20260502.12	0.29	SW	2.6	1	E
20260502.15	0.27	SW	2.8	3	E
20260502.18	0.27	S	2.4	4	N
20260502.21	0.28	SE	2.2	3	W
20260503.00	0.25	S	2.2	2	N
20260503.03	0.22	S	2.3	2	N
20260503.06	0.21	S	2.3	1	W
20260503.09	0.20	SE	2.1	1	N
20260503.12	0.21	E	2.0	1	NE
20260503.15	0.20	E	2.0	2	W
20260503.18	0.18	E	2.0	2	N
20260503.21	0.17	E	2.1	3	SW
20260504.00	0.16	SE	2.0	4	SW
20260504.03	0.18	SW	1.8	4	E
20260504.06	0.17	SW	1.8	3	NE
20260504.09	0.18	S	1.7	4	W
20260504.12	0.27	S	1.8	6	NW

### Wind condition in the Aktau

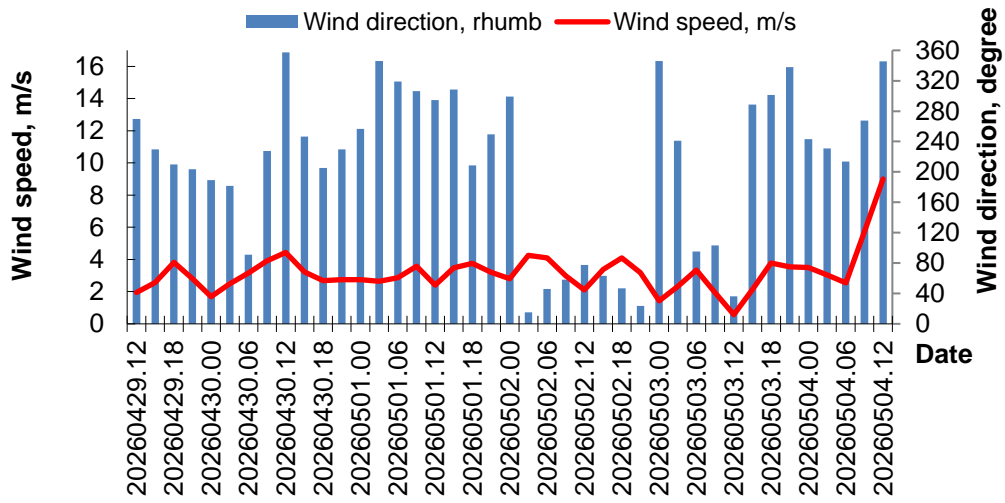


### Wave condition in the Aktau

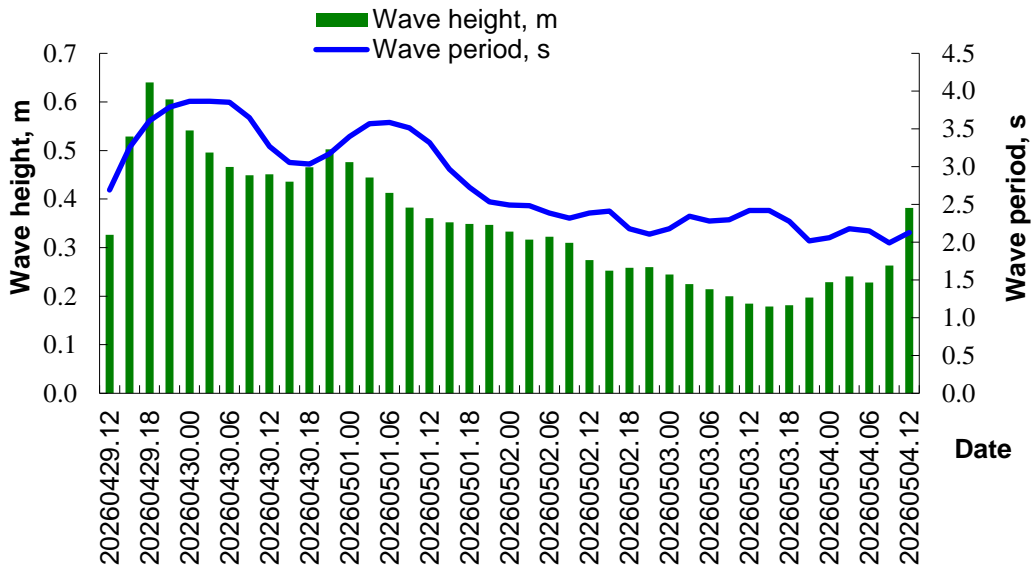


Date time	Aktau				
	Wave height, m	Направление волны, румб	Wave height, m	Скорость ветра, м/с	Wave height, m
20260429.12	0.59	S	2.9	5	N
20260429.15	0.71	S	3.3	3	W
20260429.18	0.73	SE	3.5	1	S
20260429.21	0.62	SE	3.6	2	S
20260430.00	0.54	SE	3.6	3	E
20260430.03	0.51	SE	3.7	2	SE
20260430.06	0.49	S	3.8	2	S
20260430.09	0.46	S	3.8	1	SE
20260430.12	0.46	S	3.4	2	E
20260430.15	0.48	S	2.9	4	S
20260430.18	0.55	SW	2.9	5	S
20260430.21	0.57	SW	3.1	3	E
20260501.00	0.51	SW	3.4	1	SW
20260501.03	0.46	SW	3.7	1	NW
20260501.06	0.42	SW	3.7	2	W
20260501.09	0.38	SW	3.6	3	NW
20260501.12	0.35	SW	3.3	3	NW
20260501.15	0.35	SW	2.8	4	NW
20260501.18	0.35	SW	2.6	2	W
20260501.21	0.35	SW	2.5	2	NW
20260502.00	0.34	S	2.5	5	NE
20260502.03	0.34	S	2.4	4	NE
20260502.06	0.35	SE	2.4	1	NW
20260502.09	0.32	SE	2.5	1	E
20260502.12	0.28	S	2.7	2	SE
20260502.15	0.26	S	2.8	3	SE
20260502.18	0.24	SW	2.6	1	N
20260502.21	0.24	S	2.4	1	N
20260503.00	0.24	S	2.2	3	SW
20260503.03	0.23	SW	2.2	2	E
20260503.06	0.22	SW	2.2	3	SE
20260503.09	0.21	SW	2.1	3	SE
20260503.12	0.21	W	2.0	2	SE
20260503.15	0.22	W	2.0	1	S
20260503.18	0.20	W	2.0	3	N
20260503.21	0.19	W	2.0	3	W
20260504.00	0.20	SW	1.8	4	SW
20260504.03	0.22	SW	1.9	3	SW
20260504.06	0.23	W	2.1	2	E
20260504.09	0.25	W	2.0	3	W
20260504.12	0.32	S	2.1	8	NW

### Wind condition in the Peschanyi

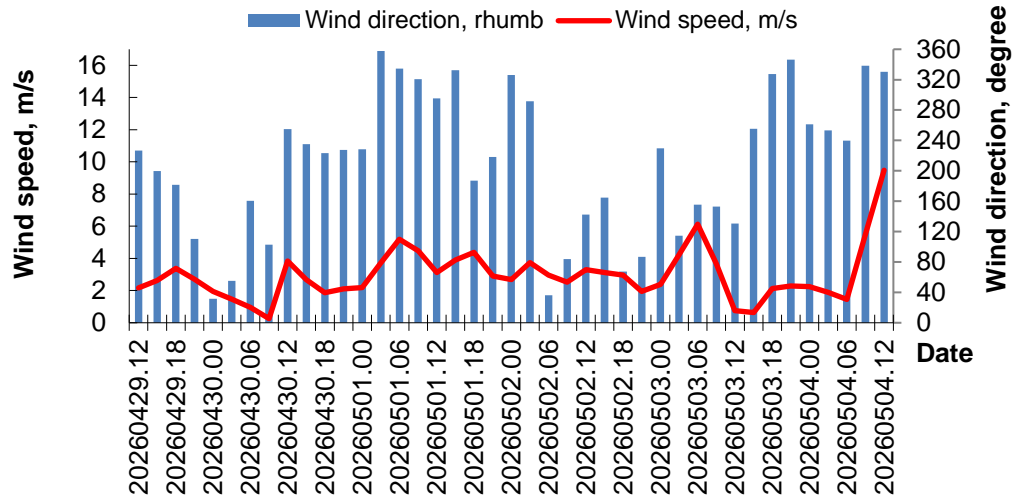


### Wave condition in the Peschanyi

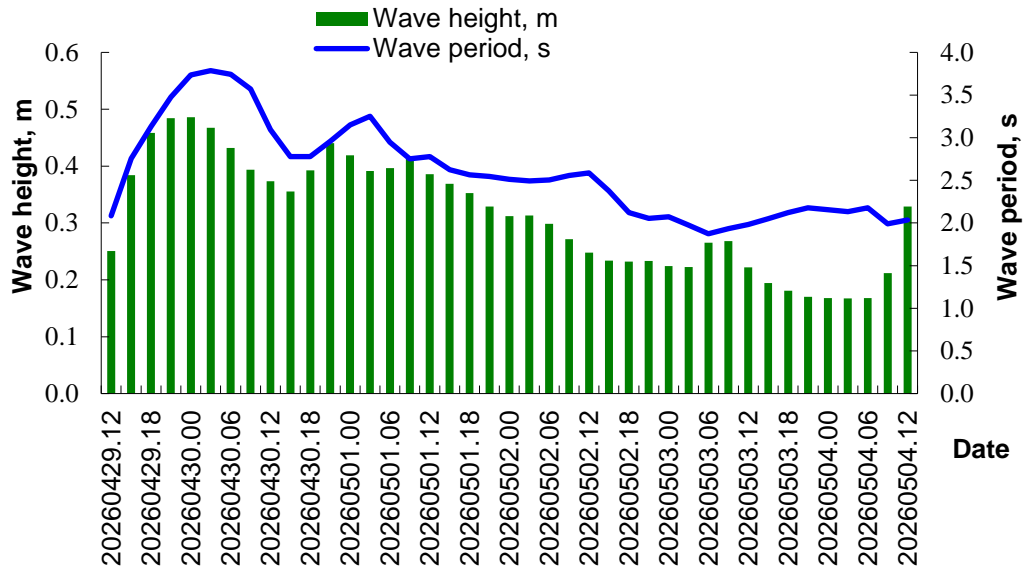


Date time	Peschanyi (Isan)				
	Wave height, m	Направление волны, румб	Wave height, m	Скорость ветра, м/с	Wave height, m
20260429.12	0.33	S	2.7	2	W
20260429.15	0.53	SE	3.3	3	SW
20260429.18	0.64	SE	3.6	4	SW
20260429.21	0.61	SE	3.8	3	SW
20260430.00	0.54	SE	3.9	2	S
20260430.03	0.50	SE	3.9	2	S
20260430.06	0.47	S	3.9	3	E
20260430.09	0.45	S	3.7	4	SW
20260430.12	0.45	S	3.3	4	N
20260430.15	0.44	S	3.1	3	SW
20260430.18	0.47	SW	3.0	3	SW
20260430.21	0.50	SW	3.2	3	SW
20260501.00	0.48	SW	3.4	3	W
20260501.03	0.44	SW	3.6	3	N
20260501.06	0.41	SW	3.6	3	NW
20260501.09	0.38	SW	3.5	4	NW
20260501.12	0.36	SW	3.3	2	NW
20260501.15	0.35	SW	3.0	3	NW
20260501.18	0.35	SW	2.7	4	SW
20260501.21	0.35	SW	2.5	3	W
20260502.00	0.33	SW	2.5	3	NW
20260502.03	0.32	S	2.5	4	N
20260502.06	0.32	S	2.4	4	NE
20260502.09	0.31	SE	2.3	3	NE
20260502.12	0.27	S	2.4	2	E
20260502.15	0.25	SW	2.4	3	NE
20260502.18	0.26	SW	2.2	4	NE
20260502.21	0.26	SE	2.1	3	NE
20260503.00	0.24	SE	2.2	1	N
20260503.03	0.22	S	2.3	2	SW
20260503.06	0.21	SW	2.3	3	E
20260503.09	0.20	SW	2.3	2	E
20260503.12	0.18	SW	2.4	1	NE
20260503.15	0.18	W	2.4	2	W
20260503.18	0.18	W	2.3	4	NW
20260503.21	0.20	SW	2.0	4	N
20260504.00	0.23	SW	2.1	4	SW
20260504.03	0.24	SW	2.2	3	SW
20260504.06	0.23	SW	2.1	3	SW
20260504.09	0.26	SW	2.0	6	W
20260504.12	0.38	S	2.1	9	N

### Wind condition in the Fetisovo

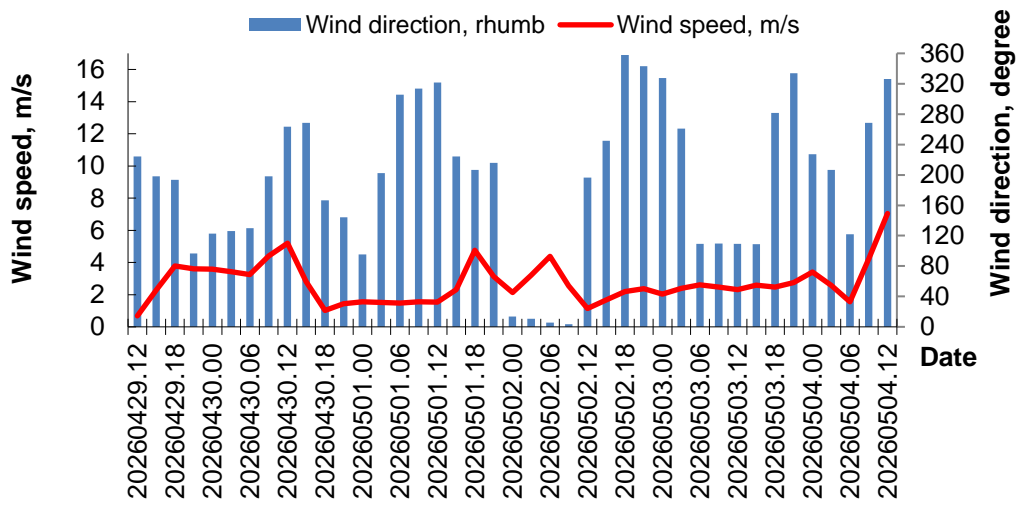


### Wave condition in the Fetisovo

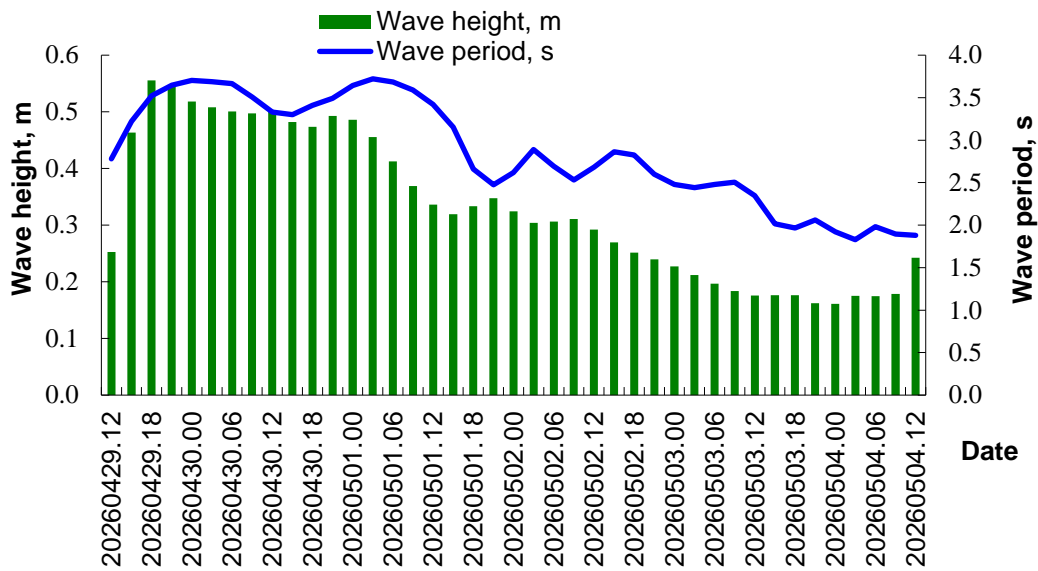


Date time	Fetisovo				
	Wave height, m	Направление волны, румб	Wave height, m	Скорость ветра, м/с	Wave height, m
20260429.12	0.25	S	2.1	2	SW
20260429.15	0.38	SE	2.8	3	S
20260429.18	0.46	S	3.1	3	S
20260429.21	0.48	S	3.5	3	E
20260430.00	0.49	S	3.7	2	NE
20260430.03	0.47	S	3.8	1	NE
20260430.06	0.43	S	3.7	1	S
20260430.09	0.39	S	3.6	0	E
20260430.12	0.37	S	3.1	4	W
20260430.15	0.36	S	2.8	3	SW
20260430.18	0.39	SW	2.8	2	SW
20260430.21	0.44	SW	3.0	2	SW
20260501.00	0.42	W	3.2	2	SW
20260501.03	0.39	W	3.3	4	N
20260501.06	0.40	SW	2.9	5	NW
20260501.09	0.41	SW	2.8	4	NW
20260501.12	0.39	SW	2.8	3	NW
20260501.15	0.37	SW	2.6	4	NW
20260501.18	0.35	SW	2.6	4	S
20260501.21	0.33	SW	2.5	3	SW
20260502.00	0.31	SW	2.5	3	NW
20260502.03	0.31	S	2.5	4	W
20260502.06	0.30	S	2.5	3	NE
20260502.09	0.27	S	2.6	3	E
20260502.12	0.25	S	2.6	3	SE
20260502.15	0.23	SW	2.4	3	S
20260502.18	0.23	SW	2.1	3	NE
20260502.21	0.23	W	2.1	2	E
20260503.00	0.22	W	2.1	2	SW
20260503.03	0.22	W	2.0	4	SE
20260503.06	0.27	NW	1.9	6	SE
20260503.09	0.27	NW	1.9	4	SE
20260503.12	0.22	NW	2.0	1	SE
20260503.15	0.19	NW	2.1	1	W
20260503.18	0.18	NW	2.1	2	NW
20260503.21	0.17	NW	2.2	2	N
20260504.00	0.17	W	2.2	2	W
20260504.03	0.17	W	2.1	2	W
20260504.06	0.17	W	2.2	1	SW
20260504.09	0.21	SW	2.0	5	N
20260504.12	0.33	S	2.0	9	NW

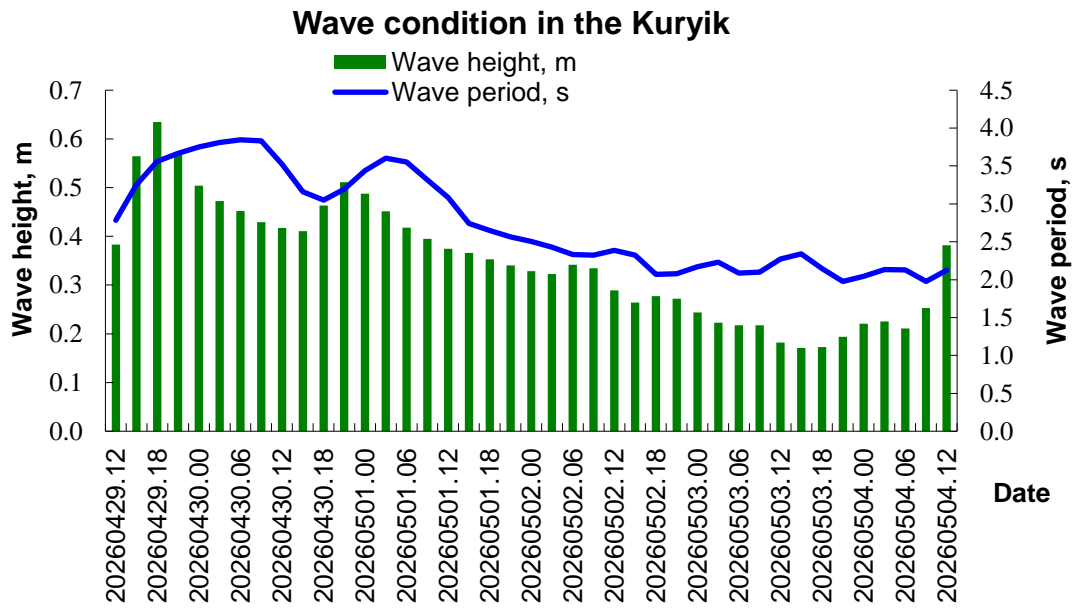
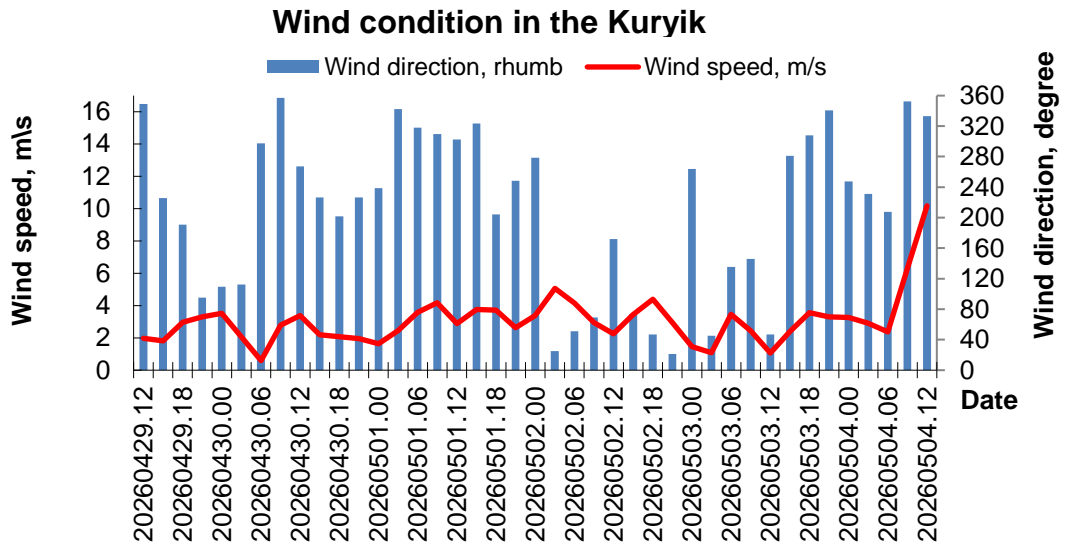
### Wind condition in the Saura



### Wave condition in the Saura



Date time	Saura				
	Wave height, m	Направление волны, румб	Wave height, m	Скорость ветра, м/с	Wave height, m
20260429.12	0.25	S	2.8	1	SW
20260429.15	0.46	SE	3.2	2	S
20260429.18	0.56	SE	3.5	4	S
20260429.21	0.54	SE	3.6	4	E
20260430.00	0.52	SE	3.7	4	SE
20260430.03	0.51	SE	3.7	3	SE
20260430.06	0.50	S	3.7	3	SE
20260430.09	0.50	S	3.5	4	S
20260430.12	0.50	S	3.3	5	W
20260430.15	0.48	S	3.3	3	W
20260430.18	0.47	S	3.4	1	S
20260430.21	0.49	SW	3.5	1	SE
20260501.00	0.49	SW	3.6	2	E
20260501.03	0.46	SW	3.7	2	S
20260501.06	0.41	SW	3.7	1	NW
20260501.09	0.37	SW	3.6	2	NW
20260501.12	0.34	SW	3.4	2	NW
20260501.15	0.32	SW	3.2	2	SW
20260501.18	0.33	SW	2.7	5	SW
20260501.21	0.35	SW	2.5	3	SW
20260502.00	0.32	SW	2.6	2	N
20260502.03	0.30	SW	2.9	3	N
20260502.06	0.31	SW	2.7	4	N
20260502.09	0.31	S	2.5	3	N
20260502.12	0.29	S	2.7	1	S
20260502.15	0.27	S	2.9	2	SW
20260502.18	0.25	S	2.8	2	N
20260502.21	0.24	S	2.6	2	N
20260503.00	0.23	S	2.5	2	NW
20260503.03	0.21	S	2.4	2	W
20260503.06	0.20	S	2.5	3	E
20260503.09	0.18	S	2.5	2	E
20260503.12	0.18	S	2.3	2	E
20260503.15	0.18	SW	2.0	3	E
20260503.18	0.18	W	2.0	2	W
20260503.21	0.16	W	2.1	3	NW
20260504.00	0.16	W	1.9	3	SW
20260504.03	0.18	W	1.8	3	SW
20260504.06	0.17	W	2.0	2	SE
20260504.09	0.18	SW	1.9	4	W
20260504.12	0.24	S	1.9	7	NW



Date time	Kuryk				
	Wave height, m	Направление волны, румб	Wave height, m	Скорость ветра, м/с	Wave height, m
20260429.12	0.38	SE	2.8	2	N
20260429.15	0.56	SE	3.3	2	SW
20260429.18	0.63	SE	3.6	3	S
20260429.21	0.57	SE	3.7	3	E
20260430.00	0.50	SE	3.7	4	E
20260430.03	0.47	S	3.8	2	E
20260430.06	0.45	S	3.8	1	NW
20260430.09	0.43	S	3.8	3	N
20260430.12	0.42	S	3.5	3	W
20260430.15	0.41	S	3.2	2	SW
20260430.18	0.46	SW	3.1	2	S
20260430.21	0.51	SW	3.2	2	SW
20260501.00	0.49	SW	3.4	2	SW
20260501.03	0.45	SW	3.6	2	N
20260501.06	0.42	SW	3.6	4	NW
20260501.09	0.40	SW	3.3	4	NW
20260501.12	0.37	SW	3.1	3	NW
20260501.15	0.37	SW	2.7	4	NW
20260501.18	0.35	SW	2.6	4	SW
20260501.21	0.34	SW	2.6	3	W
20260502.00	0.33	SW	2.5	3	W
20260502.03	0.32	S	2.4	5	NE
20260502.06	0.34	SE	2.3	4	NE
20260502.09	0.33	E	2.3	3	E
20260502.12	0.29	SE	2.4	2	S
20260502.15	0.26	S	2.3	3	E
20260502.18	0.28	NE	2.1	4	NE
20260502.21	0.27	NE	2.1	3	N
20260503.00	0.24	E	2.2	1	W
20260503.03	0.22	SW	2.2	1	NE
20260503.06	0.22	W	2.1	3	SE
20260503.09	0.22	W	2.1	2	SE
20260503.12	0.18	W	2.3	1	NE
20260503.15	0.17	W	2.3	2	W
20260503.18	0.17	W	2.1	4	NW
20260503.21	0.19	S	2.0	3	N
20260504.00	0.22	S	2.0	3	W
20260504.03	0.23	S	2.1	3	SW
20260504.06	0.21	SW	2.1	2	SW
20260504.09	0.25	SW	2.0	6	N
20260504.12	0.38	S	2.1	10	NW

*\*Calculation characteristics were obtained using the SWAN wave model, adapted in RSE «Kazhydromet» to the conditions of the Caspian Sea.*

Compiled by: Zhagparova N.N.

Checked by: Kurmangalieva A.

RSE «Kazhydromet» – Caspian Sea Hydrometeorological Research Department

Phone. (717)2 79 83 12; E-mail: [ugmikm@meteo.kz](mailto:ugmikm@meteo.kz)