

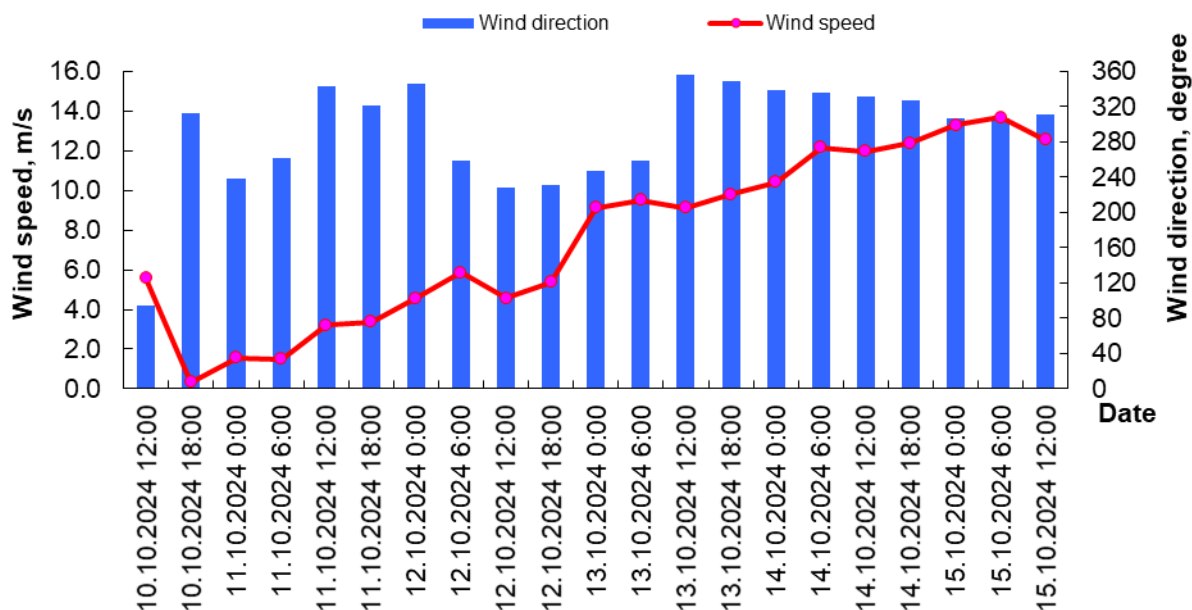


**MINISTRY OF ECOLOGY AND NATURAL RESOURCES
OF THE REPUBLIC OF KAZAKHSTAN**

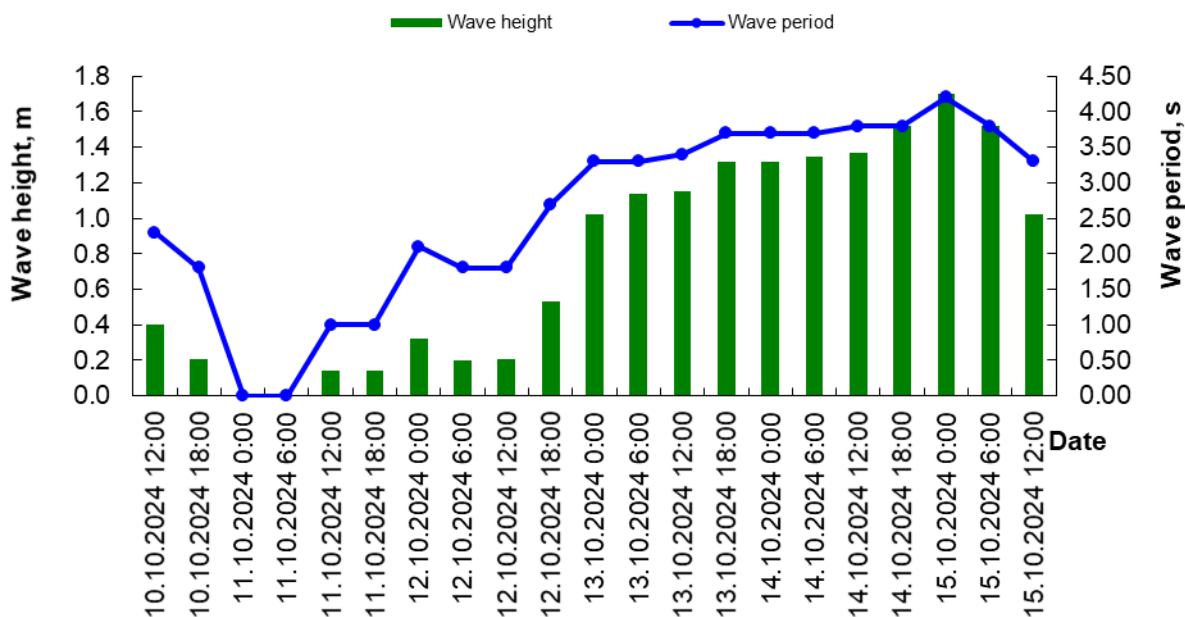
RSE «KAZHYDROMET»

**Wave and wind forecast for the Middle part of the Caspian Sea with a 5-day
advance for the period October 10 – 15, 2024**

Wind condition in the 21050 unit

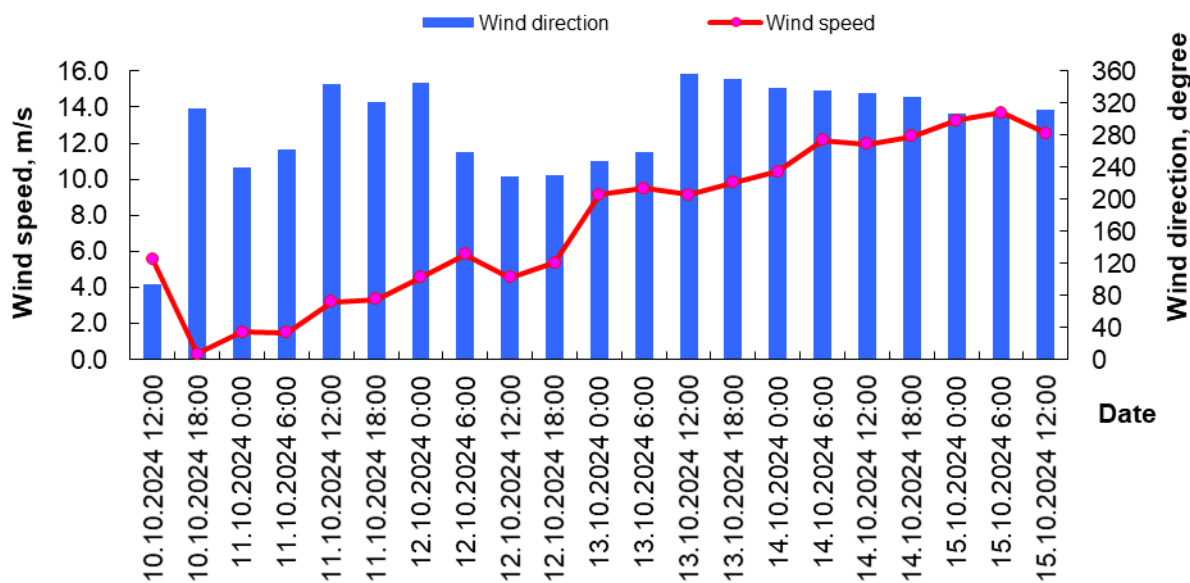


Wave condition in the 21050 unit

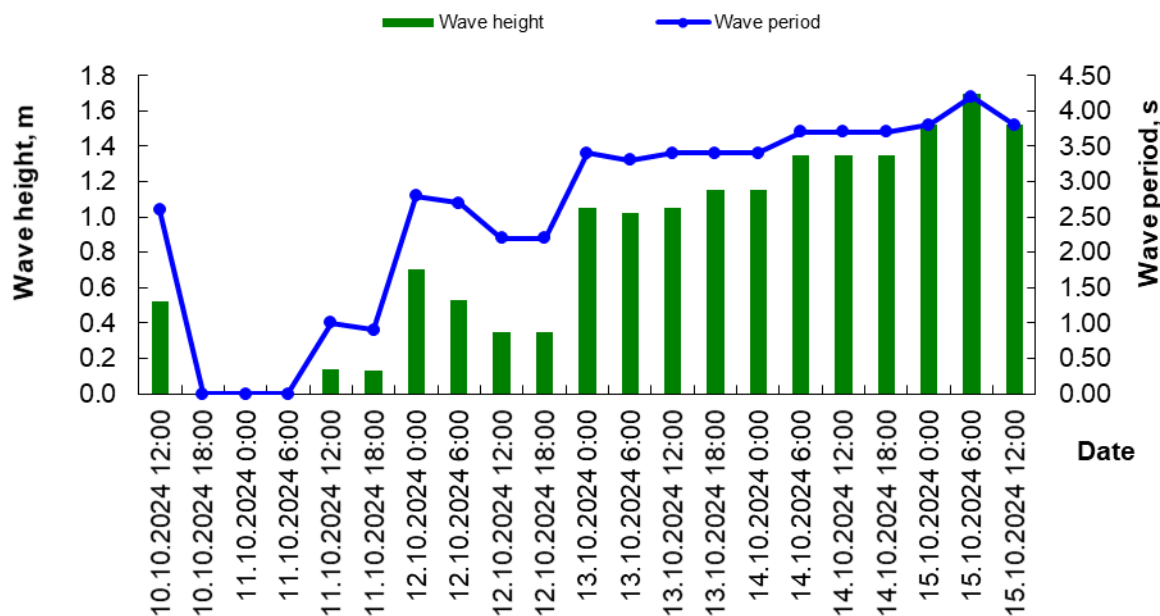


Date Time	Wind speed (WS) and wind direction (WD)		Wave height (H) and wave period (τ)	
	WS, m/s	WD, rumb	H, m	t, s
10.10.2024 12:00	5	E	0.40	2.30
10.10.2024 18:00	4	NW	0.21	1.80
11.10.2024 0:00	1	SW	0.00	0.00
11.10.2024 6:00	1	W	0.00	0.00
11.10.2024 12:00	3	N	0.14	1.00
11.10.2024 18:00	3	NW	0.14	1.00
12.10.2024 0:00	5	N	0.32	2.10
12.10.2024 6:00	4	W	0.20	1.80
12.10.2024 12:00	4	SW	0.21	1.80
12.10.2024 18:00	6	SW	0.53	2.70
13.10.2024 0:00	9	SW	1.02	3.30
13.10.2024 6:00	10	W	1.14	3.30
13.10.2024 12:00	10	N	1.15	3.40
13.10.2024 18:00	11	N	1.32	3.70
14.10.2024 0:00	11	N	1.32	3.70
14.10.2024 6:00	12	NW	1.35	3.70
14.10.2024 12:00	12	NW	1.37	3.80
14.10.2024 18:00	13	NW	1.52	3.80
15.10.2024 0:00	14	NW	1.70	4.20
15.10.2024 6:00	13	NW	1.52	3.80
15.10.2024 12:00	9	NW	1.02	3.30

Wind condition in the 21141 unit

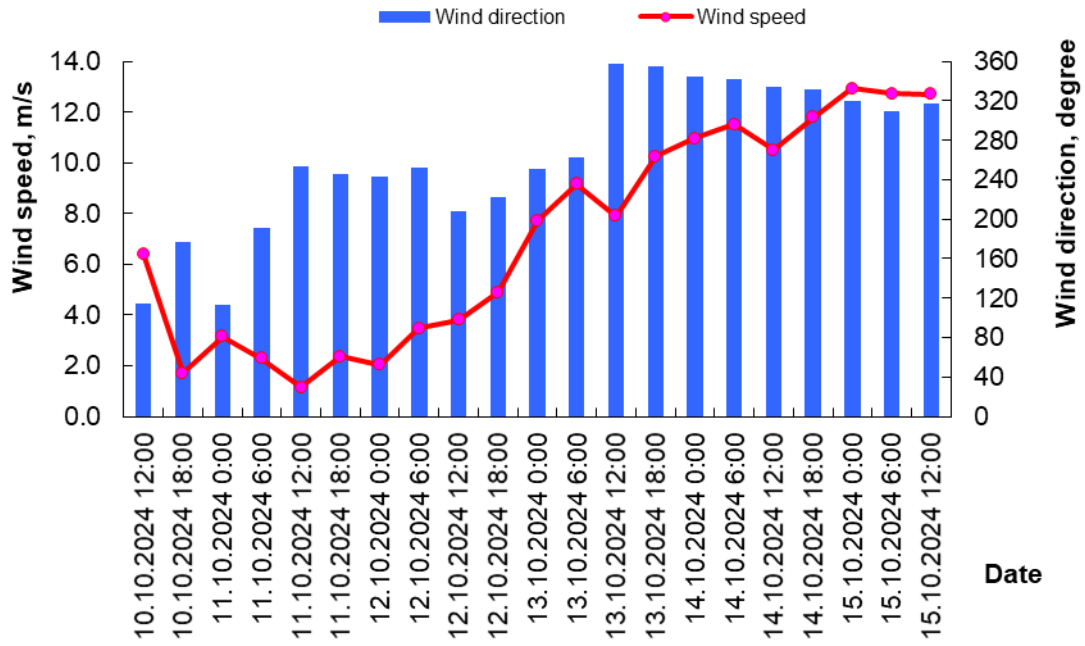


Wave condition in the 21141 unit

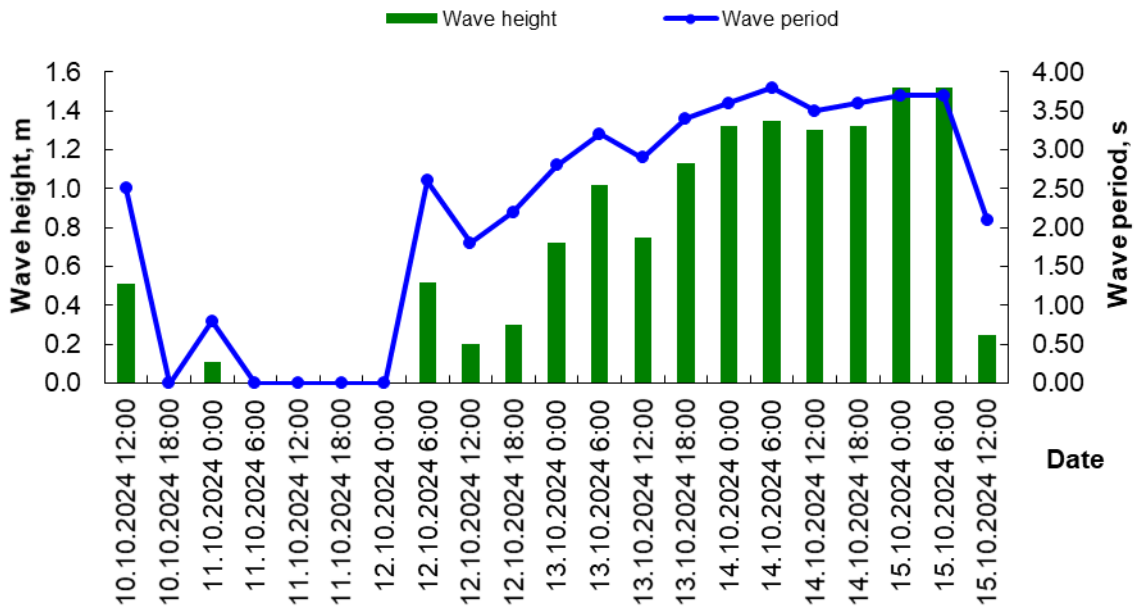


Date Time	Wind speed (WS) and wind direction (WD)		Wave height (H) and wave period (τ)	
	WS, m/s	WD, rumb	H, m	t, s
10.10.2024 12:00	6	E	0.52	2.60
10.10.2024 18:00	0	NW	0.00	0.00
11.10.2024 0:00	2	SW	0.00	0.00
11.10.2024 6:00	1	W	0.00	0.00
11.10.2024 12:00	3	N	0.14	1.00
11.10.2024 18:00	3	NW	0.13	0.90
12.10.2024 0:00	7	N	0.70	2.80
12.10.2024 6:00	6	W	0.53	2.70
12.10.2024 12:00	5	SW	0.35	2.20
12.10.2024 18:00	5	SW	0.35	2.20
13.10.2024 0:00	9	SW	1.05	3.40
13.10.2024 6:00	9	W	1.02	3.30
13.10.2024 12:00	9	N	1.05	3.40
13.10.2024 18:00	10	N	1.15	3.40
14.10.2024 0:00	10	N	1.15	3.40
14.10.2024 6:00	12	NW	1.35	3.70
14.10.2024 12:00	12	NW	1.35	3.70
14.10.2024 18:00	12	NW	1.35	3.70
15.10.2024 0:00	13	NW	1.52	3.80
15.10.2024 6:00	14	NW	1.70	4.20
15.10.2024 12:00	13	NW	1.52	3.80

Wind condition in the 21142 unit

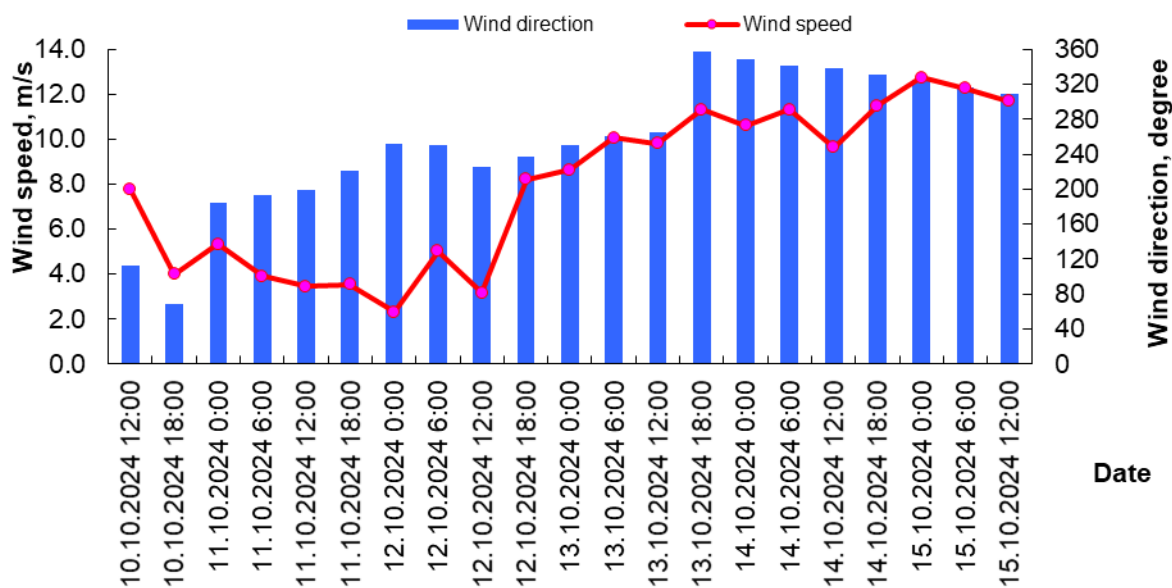


Wave condition in the 21142 unit

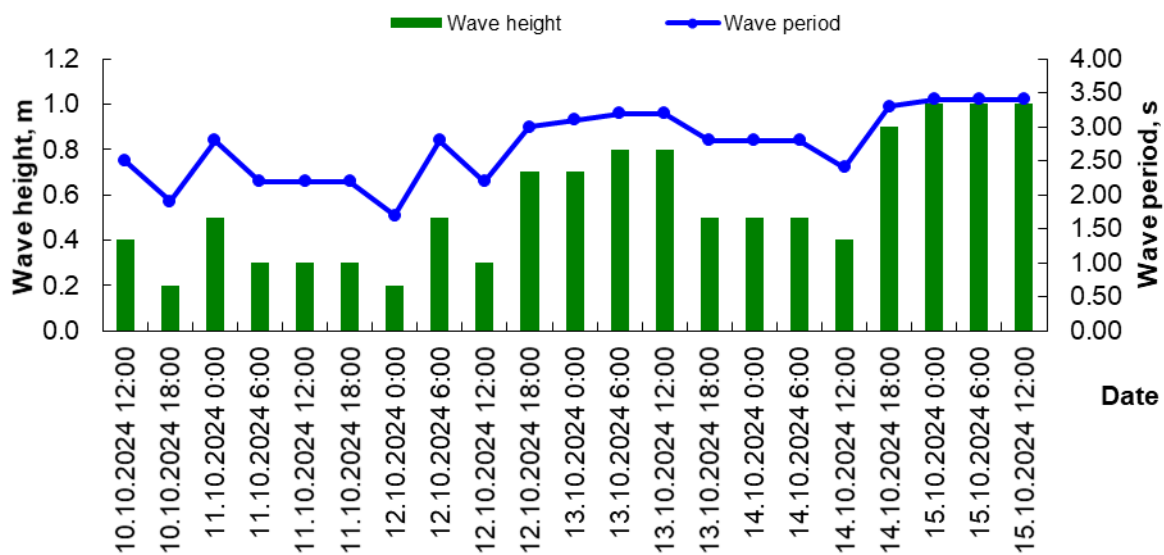


Date Time	Wind speed (WS) and wind direction (WD)		Wave height (H) and wave period (τ)	
	WS, m/s	WD, rumb	H, m	t, s
10.10.2024 12:00	6	SE	0.51	2.50
10.10.2024 18:00	2	S	0.00	0.00
11.10.2024 0:00	3	SE	0.11	0.80
11.10.2024 6:00	2	S	0.00	0.00
11.10.2024 12:00	1	W	0.00	0.00
11.10.2024 18:00	2	SW	0.00	0.00
12.10.2024 0:00	2	SW	0.00	0.00
12.10.2024 6:00	6	W	0.52	2.60
12.10.2024 12:00	4	SW	0.20	1.80
12.10.2024 18:00	5	SW	0.30	2.20
13.10.2024 0:00	8	W	0.72	2.80
13.10.2024 6:00	9	W	1.02	3.20
13.10.2024 12:00	8	N	0.75	2.90
13.10.2024 18:00	10	N	1.13	3.40
14.10.2024 0:00	11	N	1.32	3.60
14.10.2024 6:00	12	N	1.35	3.80
14.10.2024 12:00	11	NW	1.30	3.50
14.10.2024 18:00	12	NW	1.32	3.60
15.10.2024 0:00	13	NW	1.52	3.70
15.10.2024 6:00	13	NW	1.52	3.70
15.10.2024 12:00	5	NW	0.25	2.10

Wind condition in the Bautino Bay

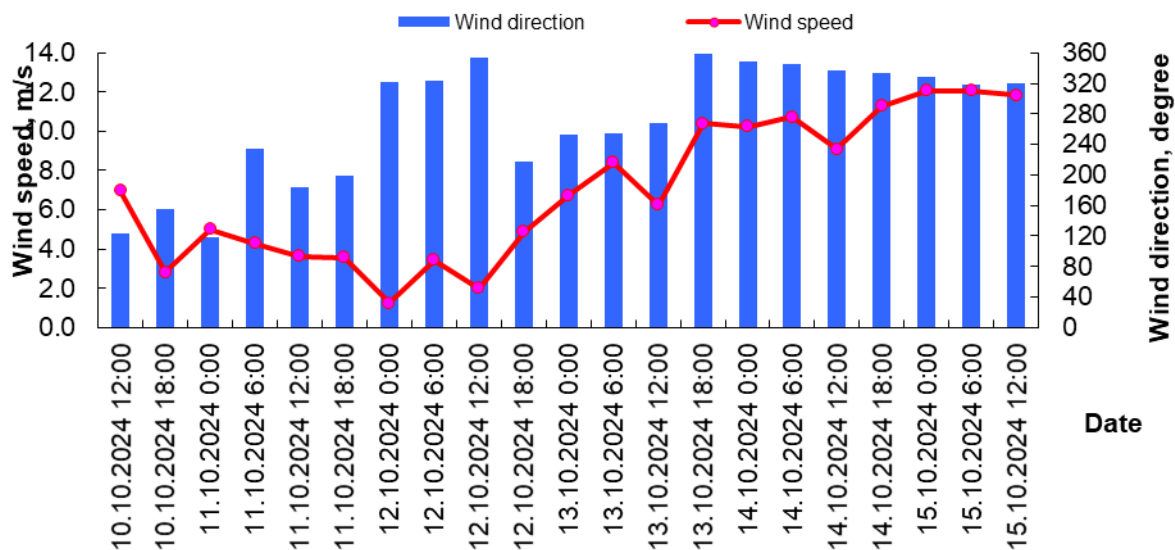


Wave condition in the Bautino Bay

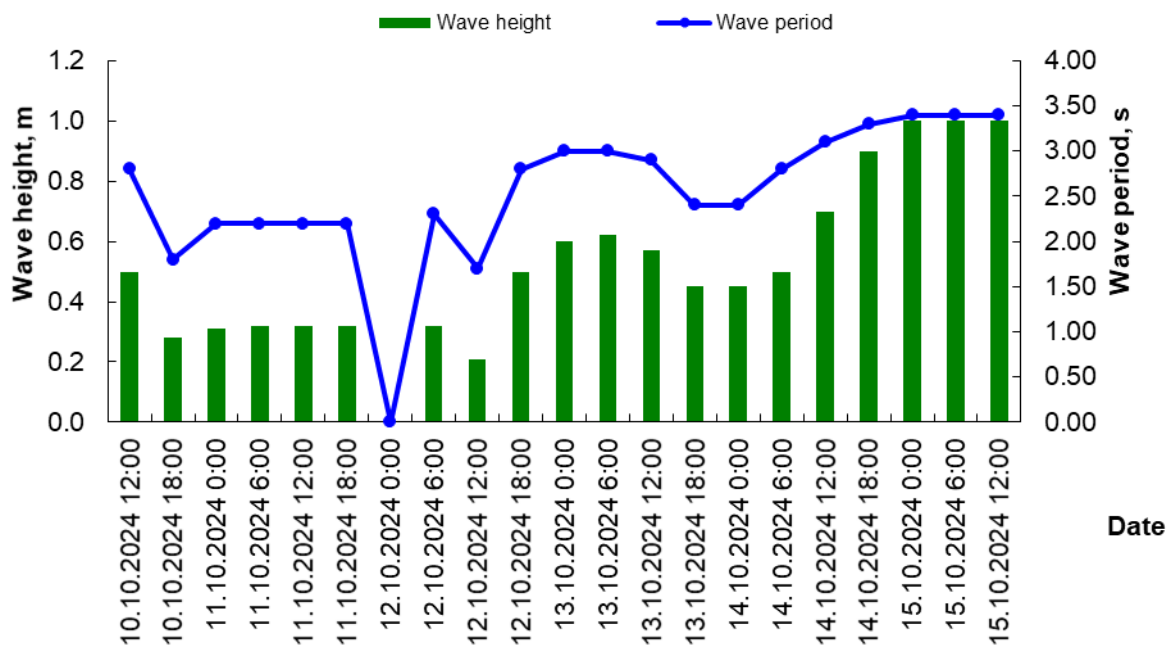


Date Time	Wind speed (WS) and wind direction (WD)		Wave height (H) and wave period (τ)	
	WS, m/s	WD, rumb	H, m	t, s
10.10.2024 12:00	8	E	0.40	2.50
10.10.2024 18:00	4	E	0.20	1.90
11.10.2024 0:00	5	S	0.50	2.80
11.10.2024 6:00	4	S	0.30	2.20
11.10.2024 12:00	3	S	0.30	2.20
11.10.2024 18:00	4	SW	0.30	2.20
12.10.2024 0:00	2	W	0.20	1.70
12.10.2024 6:00	5	W	0.50	2.80
12.10.2024 12:00	3	SW	0.30	2.20
12.10.2024 18:00	8	SW	0.70	3.00
13.10.2024 0:00	9	W	0.70	3.10
13.10.2024 6:00	10	W	0.80	3.20
13.10.2024 12:00	10	W	0.80	3.20
13.10.2024 18:00	11	N	0.50	2.80
14.10.2024 0:00	11	N	0.50	2.80
14.10.2024 6:00	11	N	0.50	2.80
14.10.2024 12:00	10	N	0.40	2.40
14.10.2024 18:00	11	NW	0.90	3.30
15.10.2024 0:00	13	NW	1.00	3.40
15.10.2024 6:00	12	NW	1.00	3.40
15.10.2024 12:00	12	NW	1.00	3.40

Wind condition in the Kuryik Bay



Wave condition in the Kuryik Bay



Date Time	Wind speed (WS) and wind direction (WD)		Wave height (H) and wave period (τ)	
	WS, m/s	WD, rumb	H, m	t, s
10.10.2024 12:00	7	SE	0.50	2.80
10.10.2024 18:00	3	SE	0.28	1.80
11.10.2024 0:00	5	SE	0.31	2.20
11.10.2024 6:00	4	SW	0.32	2.20
11.10.2024 12:00	4	S	0.32	2.20
11.10.2024 18:00	4	S	0.32	2.20
12.10.2024 0:00	1	NW	0.00	0.00
12.10.2024 6:00	3	NW	0.32	2.30
12.10.2024 12:00	2	N	0.21	1.70
12.10.2024 18:00	5	SW	0.50	2.80
13.10.2024 0:00	7	W	0.60	3.00
13.10.2024 6:00	8	W	0.62	3.00
13.10.2024 12:00	6	W	0.57	2.90
13.10.2024 18:00	10	N	0.45	2.40
14.10.2024 0:00	10	N	0.45	2.40
14.10.2024 6:00	11	N	0.50	2.80
14.10.2024 12:00	9	NW	0.70	3.10
14.10.2024 18:00	11	NW	0.90	3.30
15.10.2024 0:00	12	NW	1.00	3.40
15.10.2024 6:00	12	NW	1.00	3.40
15.10.2024 12:00	12	NW	1.00	3.40

Made by: Zhagparova N.N.

Checked by: Shishkina G.